



LA5492

Audo Copenhagen JWDA Pendant

SOURCE: <https://www.davidvillagelighting.co.uk/product/Audo-Copenhagen-JWDA-Pendant/19143>



PRODUCT DESCRIPTION

Designer: Jonas Wagell

Audo Copenhagen JWDA Pendant Light

A part of the [Audo Copenhagen JWDA collection](#), the JWDA pendant was inspired by a traditional oil lamp, featuring a stunning blown opal glass lampshade and a polished brass fitting. The fitting is equipped with a lovely bronzed brass dimmer switch, harking back to the oil lamp design to update old ideals for a modern application.

The JWDA pendant lamp is suitable for a wide variety of settings and produces a warm, diffused glow. The size of the pendant light makes it perfect for use alone and in multiple and can also be used alongside other from the JWDA range for a consistent lighting scheme. Use the gorgeous dimmer switch to create the exact ambience you want with this minimalist and timeless pendant.

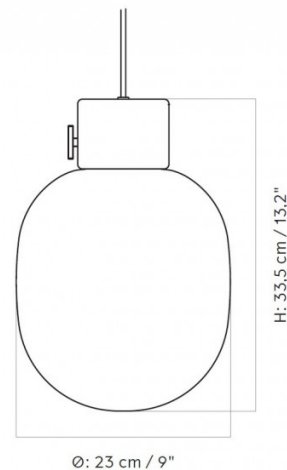
PRODUCT SPECIFICATION

Light Source: 1 x Max 3.5W G9 (included)

IP Code: 20

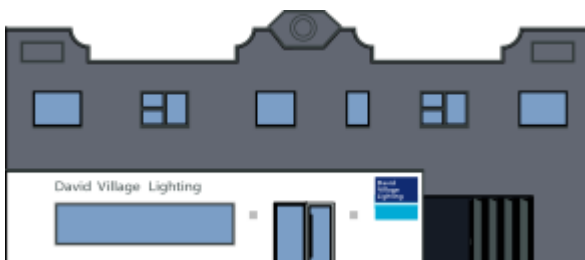
Dimming: Integrated dimmer on the product.

Dimensions: Shade: Ø23cm
Height: 33.5cm
Ceiling Canopy: Ø11.5cm
Cable Length: 400cm



Ø: 23 cm / 9"

H: 33.5 cm / 13.2"



For all sales and technical enquiries, please contact:

+44 (0)114 263 4266

info@davidvillagelighting.co.uk

www.davidvillagelighting.co.uk