



## Menu GM 15 Suspension

LA5478

SOURCE: <https://www.davidvillagelighting.co.uk/product/menu-gm-15-suspension/19121>



### PRODUCT DESCRIPTION

#### Menu GM 15 Suspension

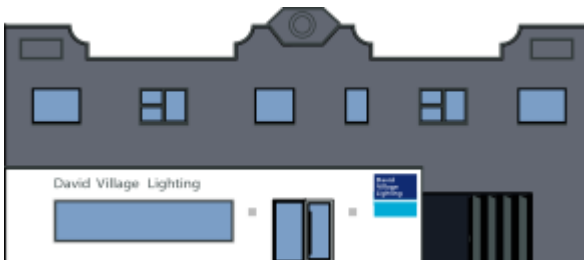
It is used every day, therefore it deserves to be beautiful as well as practical. That was the philosophy of pioneering designer and architect Grethe Meyer (1918-2008), a trailblazer for women in the industry. Grethe designed for the way people live, spending hours watching and analysing before putting pen to paper. The lamp is available in two sizes. Hang one over the dining table, two smaller ones as a pair, or install together in bunches.

Materials: Painted Steel, Solid Copper with Lacquer or Solid Brass with Lacquer

### PRODUCT SPECIFICATION

**Dimming:** Dimmable via mains phase dimming

**Dimensions:** H 12 cm  
15 cm Diameter  
300 cm cable



**For all sales and technical enquiries, please contact:**

+44 (0)114 263 4266

[info@davidvillagelighting.co.uk](mailto:info@davidvillagelighting.co.uk)

[www.davidvillagelighting.co.uk](http://www.davidvillagelighting.co.uk)