

.LIGHT ATTACK.

## Light Attack Daylight LED Wall

LA5418

SOURCE: <https://www.davidvillagelighting.co.uk/product/light-attack-daylight-led-wall/18997>



### PRODUCT DESCRIPTION

Light Attack Daylight Wall.

Placed near the headboard of the bed illuminates good readings, or wall furniture with light, covering the internal structure with a comfortable and relaxing beam.

The PowerLED technology is housed in a cylindrical, movable, rotatable and adjustable aluminium support.

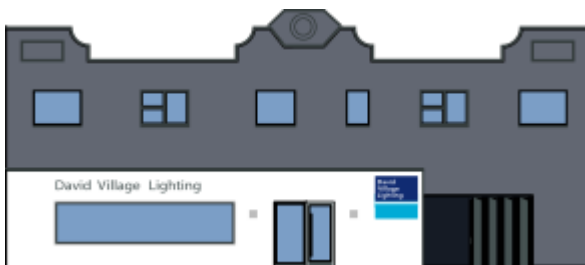
The wall light with its ultra-thin design, entirely in aluminium, is an expression of great versatility and energy saving, qualities that earned it the Red Dot Design Award 2016.

Available with different filter options, please contact us for more information.

### PRODUCT SPECIFICATION

**Light Source:** 4W, 3000K, 363lumens

**IP Code:** 20



**For all sales and technical enquiries, please contact:**

+44 (0)114 263 4266

[info@davidvillagelighting.co.uk](mailto:info@davidvillagelighting.co.uk)

[www.davidvillagelighting.co.uk](http://www.davidvillagelighting.co.uk)