

# LE KLINT Le Klint Arc Pendant

LA5408

SOURCE: <https://www.davidvillagelighting.co.uk/product/Le-Klint-Arc-Pendant/18986>



## PRODUCT DESCRIPTION

**Designer:** Manér Studio

### Arc Pendant Light by Le Klint

The Arc pendant light is part of the [Le Klint Arc collection](#), a series of lights designed by Nanna Neergaard and Marie Hesseldahl. Creating the Manér Studio in 2016, the design pair strive to use stories surrounding their projects to produce a design that is inspired by its rich history. Using old techniques throughout their projects, they want to produce designs that are functional whilst maintaining a fresh, contemporary look.

The Arc pendant has been produced with this in mind, as they take inspiration from the Danish Grundtvig's Church, which was designed by P.V Jensen Klint, the father of Le Klint's founder. Boasting beautiful yellow brick arches and tall ceilings, the design duo incorporate this into their lampshade, using carved curves that reflect the pleated lampshades that have been famously made by Le Klint. With a contrasting wooden support, this pendant light looks both modern and timeless and with a diffused, downward light the Arc pendant will work best in lounge areas and bedrooms.

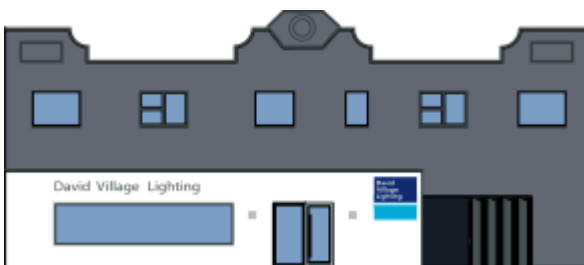
## PRODUCT SPECIFICATION

**Light Source:** 1 x E27 LED 15W max (excluded)

**IP Code:** 20

**Dimming:** Dimmable via mains phase dimming

**Dimensions:** Ø15cm  
23cm depth  
27cm height



**For all sales and technical enquiries, please contact:**

+44 (0)114 263 4266

[info@davidvillagelighting.co.uk](mailto:info@davidvillagelighting.co.uk)

[www.davidvillagelighting.co.uk](http://www.davidvillagelighting.co.uk)