

innermost®

LA5343

Innermost Kepler LED Pendant Light

SOURCE: <https://www.davidvillagelighting.co.uk/product/Innermost-Kepler-LED-Pendant-Light/18857>



PRODUCT DESCRIPTION

Designer: Cohda

Innermost Kepler LED Pendant Light

Inspired by the discoveries of Johannes Kepler, the Kepler Pendant Light embodies a balance between scientific innovation and artistic expression. Designed by Cohda, it is crafted from a fine micro-weave material that refracts light into a kaleidoscopic array. Lightweight and minimalist, the Kepler is suitable for intimate settings or as a striking accent in modern interiors. With its powerful 10.5W LED, this pendant creates a subtle yet mesmerising ambiance.

The 95 expands upon Cohda's vision, offering a larger-scale illumination ideal for statement lighting installations. This 103 cm pendant projects a similar kaleidoscopic light effect across larger areas, using 15W LEDs to produce a warm, inviting glow. Its cosmic-inspired design and larger size make it well-suited to open-plan spaces, hospitality settings, and contemporary galleries, adding a unique touch that draws the eye and enriches any environment.

PRODUCT SPECIFICATION

Light Source: 10.5W, 3000K, 1100 Lumens

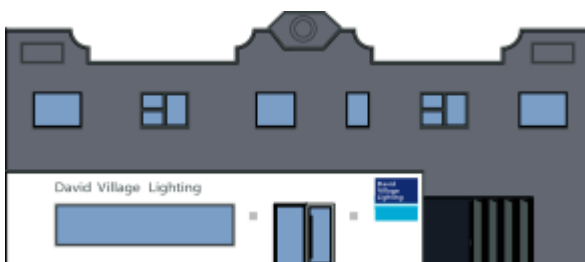
IP Code: 20

Dimming: Dimmable via Triac dimming.

Dimensions: **65:**
73cm x 73cm

95:
101cm x 101cm

Cable length: 4m



For all sales and technical enquiries, please contact:

+44 (0)114 263 4266

info@davidvillagelighting.co.uk

www.davidvillagelighting.co.uk