



LA5338/CSM

Case Solid Cylinder Suspension - Marble

SOURCE: <https://www.davidvillagelighting.co.uk/product/Case-Solid-Cylinder-Suspension---Marble/18850>



PRODUCT DESCRIPTION

Case Solid Cylinder Suspension - Marble

A pure cylindrical form, crafted from solid fine-polished Nero Marquina marble. The rounded inner edge of the shade base is a design signature of the Solid collection. A patented adjustable shade support allows the shade to be hung vertical and straight. As marble is a natural material the hue and veining will vary from piece to piece, making each shade body unique.

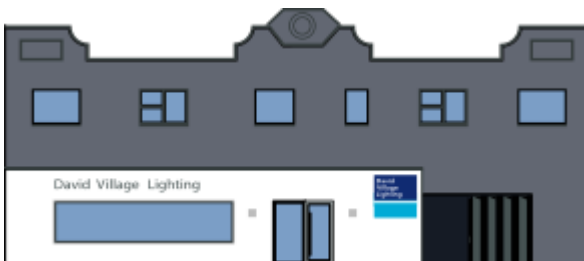
PRODUCT SPECIFICATION

Light Source: 1 x max 8W GU10 LED (excluded)

IP Code: 20

Dimming: Dimmable via mains phase dimming

Dimensions: Ø 8.8 cm
13 cm height
200 cm cable length
8.6 cm ceiling canopy height



For all sales and technical enquiries, please contact:

+44 (0)114 263 4266

info@davidvillagelighting.co.uk

www.davidvillagelighting.co.uk