



Case Solid Cylinder Pendant

LA5338/CS

SOURCE: <https://www.davidvillagelighting.co.uk/product/Case-Solid-Cylinder-Pendant/18849>



PRODUCT DESCRIPTION

Designer: Terence Woodgate

Case Solid Cylinder Pendant

The Case Solid Cylinder Pendant Collection is designed by British designer Terence Woodgate. In keeping with Woodgate's minimalistic style, these pendants are sleek and modern, and the shades provide a striking profile. The LED lamp is set back to avoid glare, and the patented shade support allows the pendant to be hung vertically and straight.

The Case Solid Cylinder Pendants are available in marble, oak, and walnut. Because of the natural state of these materials, the veining, grain, and colour will vary from piece to piece, making each pendant truly unique. The direct downwards light emitted from these pendants make them perfect for hanging above surfaces such as in the kitchen or above the dining room table. They can be displayed as a lone pendant or in clusters, and the height that the pendant hangs can also be adjusted to fit into its environment seamlessly.

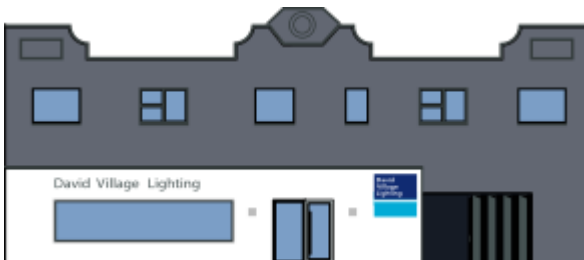
PRODUCT SPECIFICATION

Light Source: 1 x Max 8W GU10 LED (excluded)

IP Code: 20

Dimming: Dimmable via mains phase dimming.

Dimensions: Ø8.8cm
Height 13cm
Cable Length: 200cm



For all sales and technical enquiries, please contact:

+44 (0)114 263 4266

info@davidvillagelighting.co.uk

www.davidvillagelighting.co.uk