



# Case Core 3 Pendant Cluster

LA5337/3

SOURCE: <https://www.davidvillagelighting.co.uk/product/Case-Core-3-Pendant-Cluster/18840>



## PRODUCT DESCRIPTION

**Designer:** Terence Woodgate

### Case Core Triple Suspension

The Core 3 Pendant Cluster is designed by British designer Terence Woodgate for Case. Each pendant is crafted from naturally occurring marble, which means the colour and veining on each piece will vary slightly, giving you a truly unique pendant. Woodgate designed the Core 3 with flexibility in mind. The height that each pendant hangs from can be altered, giving you the freedom to arrange the cluster to your requirements. This helps The Core 3 fit seamlessly into a range of decors and personal styles.

The Core 3 Pendant Cluster omits a direct downward light, making it perfect to hang above any surface, whether in a domestic or commercial space. When lit, the bottom part of each pendant is illuminated slightly, creating a soft and ambient glow.

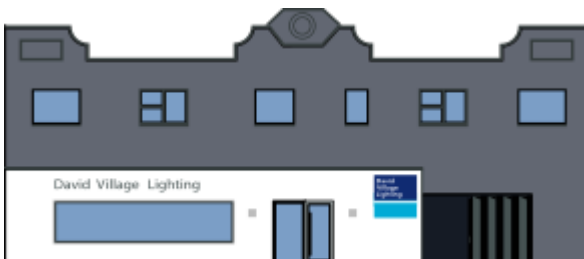
## PRODUCT SPECIFICATION

**Light Source:** 3 x Max 3W G9 LED (excluded)

**IP Code:** 20

**Dimming:** Dimmable via mains phase dimming.

**Dimensions:** Pendant: Ø5.2cm  
Height: 12cm  
Cable Length: 200cm



**For all sales and technical enquiries, please contact:**

+44 (0)114 263 4266

[info@davidvillagelighting.co.uk](mailto:info@davidvillagelighting.co.uk)

[www.davidvillagelighting.co.uk](http://www.davidvillagelighting.co.uk)