

**louis poulsen**

## Louis Poulsen PH 5 Pendant

**LA3292**

SOURCE: <https://www.davidvillagelighting.co.uk/product/Louis-Poulsen-PH-5-Pendant/18734>



### PRODUCT DESCRIPTION

**Designer:** Poul Henningsen

### PH 5 Pendant Light by Louis Poulsen

Poul Henningsen designed the PH 5 pendant back in 1958 after his very successful PH series and in response to changes in light bulb size and shapes. The light fixture radiates a beautiful and warm glow that shines both upwards and downwards and is always glare free. The original design is now available in 21 finish options, 19 coloured and 2 metallic ones, thus allowing you to choose a PH 5 pendant light that fits best with your home decor. Alternatively, the pendant can be hung in multiples using different finishes, creating your own colourful PH 5 cluster.

The copper and brass surfaces are untreated. This means that over time the surface will form a patina, adding to its beauty. That process might have already begun when the product is delivered.

### PRODUCT SPECIFICATION

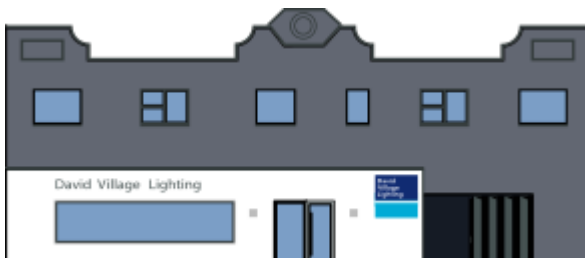
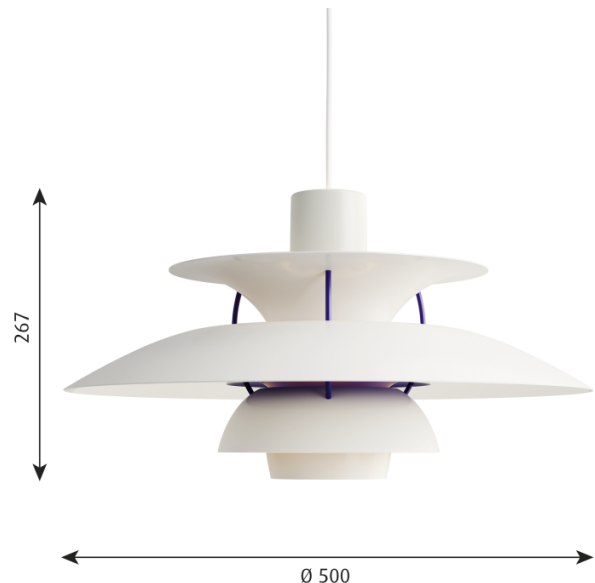
**Light Source:** 1 x Max 12W E27 LED (Excluded)

**IP Code:** 20

**Dimming:** Dimmable via mains phase dimming.

**Dimensions:** Shade: Ø50cm  
Shade Height: 26.7cm

Cable Length: 300cm



**For all sales and technical enquiries, please contact:**

+44 (0)114 263 4266

[info@davidvillagelighting.co.uk](mailto:info@davidvillagelighting.co.uk)

[www.davidvillagelighting.co.uk](http://www.davidvillagelighting.co.uk)