

**MUUTO****Muuto Halves Side Table****LA10044**SOURCE: <https://www.davidvillagelighting.co.uk/product/muuto-halves-side-table/18722>**PRODUCT DESCRIPTION****Designer:** MSDS Studio**Muuto Halves Side Table**

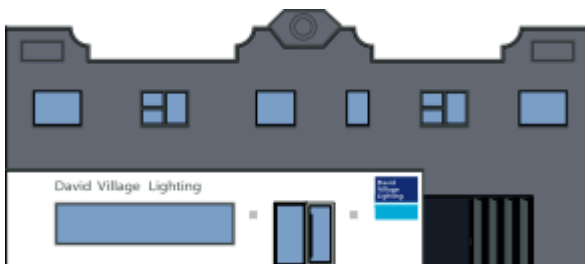
MSDS Studio designed the Halves side table after experimenting with different forms and shapes, emphasising on planes and intersections. The Halves table by Muuto is youthful and informal, but also has an abstract element to it.

The Halves side table has an ever changing form, depending how you look at it, you can view the different aspects of the table through time. The side table balances between functional furniture and abstract art. The use of acrylic stone adds a natural look, the pieces are welded together and then polished in order to give it a smooth and soft feel.

The designer team, MSDS Studio, are based in Toronto and specialise in furniture and interior design, wanting to create pieces that combine traditional forms and new perspectives. The studio is run by Jonathan Sabine and Jessica Nakanishi, the duo were named Canadian product designers of the year in 2015.

**PRODUCT SPECIFICATION**

**Dimensions:** Ø 35.5 cm  
47 cm height

**For all sales and technical enquiries, please contact:**

+44 (0)114 263 4266

[info@davidvillagelighting.co.uk](mailto:info@davidvillagelighting.co.uk)[www.davidvillagelighting.co.uk](http://www.davidvillagelighting.co.uk)