

**kdl**n

LA5279

# KDLN Victoria LED Suspension Light

SOURCE: <https://www.davidvillagelighting.co.uk/product/KDLN-Victoria-LED-Suspension-Light/18708>



## PRODUCT DESCRIPTION

Designer: 449

## KDLN Victoria LED Suspension Light

The Victoria suspension light was designed by Alberto Saggia and Valerio Sommella, a design duo who studied design at Politecnico of Milan with the first qualification specialised in lighting design. This duo created a light inspired by the giant water lilies in the Amazon with wide discs suspended at different levels. This naturalistic shape makes a delicate statement that would bring a calming atmosphere to your home. The tranquility of lilies floating on the Amazon is translated through the simple and peaceful LED light that appears from the bottom of the metal rod. Ideal for a dining or living space with high ceilings, this stunning design will add a relaxing atmosphere to any space.

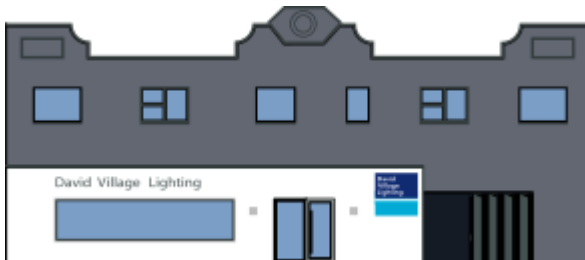
## PRODUCT SPECIFICATION

**Light Source:** 2 x 30W + 1 x 4.8W, 2700K, 5900 lumens

**IP Code:** 20

**Dimming:** Dimmable only via phase cut dimming systems

**Dimensions:** 55cm height  
70cm width  
47cm depth  
Ø12.5cm ceiling canopy  
180cm cable length



**For all sales and technical enquiries, please contact:**

+44 (0)114 263 4266

[info@davidvillagelighting.co.uk](mailto:info@davidvillagelighting.co.uk)

[www.davidvillagelighting.co.uk](http://www.davidvillagelighting.co.uk)