

# FOSCARINI

## Foscarini Arumi LED Pendant

LA5011

SOURCE: <https://www.davidvillagelighting.co.uk/product/Foscarini-Arumi-LED-Pendant/18341>



### PRODUCT DESCRIPTION

**Designer:** Paolo Lucidi & Luca Pevere

### Arumi LED Pendant Light by Foscarini

The Arumi LED pendant was designed by Luca Pevere and Paolo Lucidi, a design duo that strive to create products by using technology and materials in a new way. This pendant is no exception as the lampshade is made from die-cast aluminium, sanded by hand to create a matt effect that is dynamic and rough. The designers purposefully didn't use a protective coat on the shade so that, over time, the surface alters creating a unique and distinct look.

The classic silhouette of the Arumi LED pendant light is modernised by lines that run down the side and the contrasting polished metal rim. The integrated LED light source also makes this light energy saving and is encased in a PMMA cylinder to provide a direct yet effective glow. The light is also diffused, wonderful for softly illuminating the room. This pendant light can be used in a wide variety of settings in both commercial and domestic interiors, and can be used alone, in rows or a lovely cluster. Put over tables or surfaces as a spotlight or use as ambient lighting in the room.

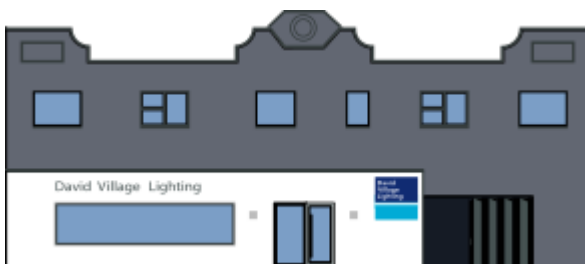
### PRODUCT SPECIFICATION

**Light Source:** 10W, 2700K, 850 lumens

**IP Code:** 20

**Dimming:** Dimmable via Triac dimming

**Dimensions:** Ø14cm shade  
10cm shade height  
Ø8cm ceiling rose  
340cm drop



**For all sales and technical enquiries, please contact:**

+44 (0)114 263 4266

[info@davidvillagelighting.co.uk](mailto:info@davidvillagelighting.co.uk)

[www.davidvillagelighting.co.uk](http://www.davidvillagelighting.co.uk)