

# Northern Northern Large Dahl Pendant

LA4914

SOURCE: <https://www.davidvillagelighting.co.uk/product/northern-large-dahl-pendant/18201>



## PRODUCT DESCRIPTION

**Designer:** Birger Dahl

### Northern Dahl Pendant

2016 marks the centenary of Birger Dahl's birth, which Northern Lighting are commemorating with the launch of this timeless glass pendant. Dahl designed the lamp in 1956 and installed it in the renovated Norwegian Parliament building two years later. Although Dahl is a classic mid-century design, its minimal form and smooth, unembellished surfaces still have a contemporary appearance today. The shade is made from mouth-blown glass and etched by a surface treatment that creates a smooth matt finish. Dahl's metal parts are dark grey or light green, or made in matt brass. The shade attaches to a metal disc at the top and makes space for a pair of concentric rings to slot into the opening down below. The pendant has the same understated features that characterise Dokka and Birdy – two other classic Birger Dahl designs also re-introduced by Northern Lighting.

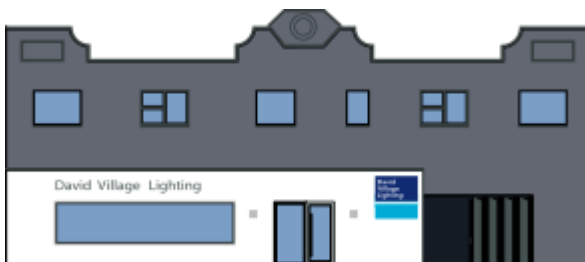
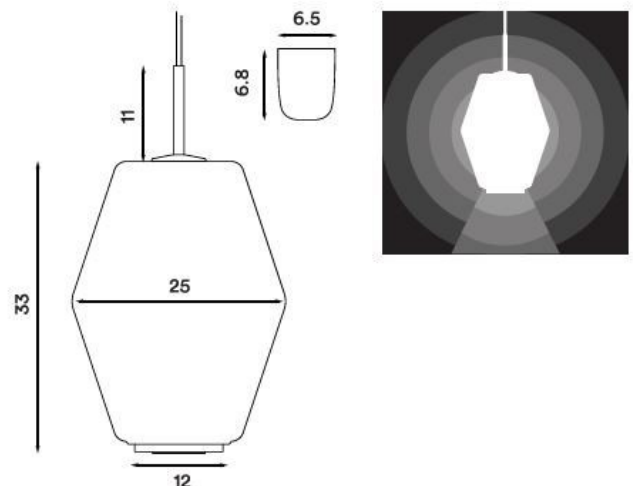
## PRODUCT SPECIFICATION

**Light Source:** 1 x Max 100W E27 (excluded)

**IP Code:** 20

**Dimming:** Dimmable via mains phase dimming.

**Dimensions:** Height: 33cm  
Width: 25cm  
Cable Length: 370cm



**For all sales and technical enquiries, please contact:**

+44 (0)114 263 4266

[info@davidvillagelighting.co.uk](mailto:info@davidvillagelighting.co.uk)

[www.davidvillagelighting.co.uk](http://www.davidvillagelighting.co.uk)