



Tom Dixon Fade Pendant

LA4887

SOURCE: <https://www.davidvillagelighting.co.uk/product/Tom-Dixon-Fade-Pendant/18108>



PRODUCT DESCRIPTION

Tom Dixon Fade Pendant

Fade pendant feature light is a blown moulded shade made from polycarbonate. Resembling a cannon, the light focusses the lightbulb's output downwards acting as the ultimate oversized spotlight. The main feature of this stunning Tom Dixon Design is the reason for the name 'Fade', three classic metallic finishes fade from full opacity to clear at the narrowest point. This beautiful attribute is not only a decorative feature but helps direct the light downwards without creating any glare.

Tom Dixon Fade pendant would be ideal for spaces such as dining areas or kitchen islands/counters to give a good amount of focused light for task as well as adding style.

Clear cable

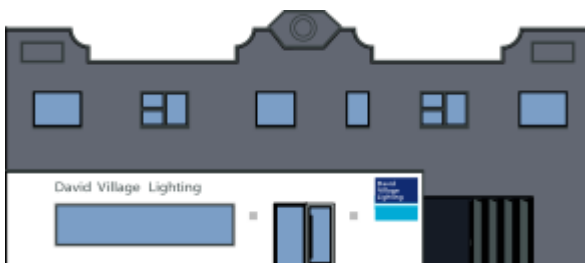
PRODUCT SPECIFICATION

Light Source: 42watt max E27 (excluded)

IP Code: 20

Dimming: Dimmable via mains phase dimming.

Dimensions: Cable Length: 250cm
Width: 30cm
Shade height: 48cm



For all sales and technical enquiries, please contact:

+44 (0)114 263 4266

info@davidvillagelighting.co.uk

www.davidvillagelighting.co.uk