

**FOSCARINI**

LA4873/S

## Foscarini Twice as Twiggy LED Pendant

SOURCE: <https://www.davidvillagelighting.co.uk/product/Foscarini-Twice-as-Twiggy-LED-Pendant/18088>



### PRODUCT DESCRIPTION

**Designer:** Marc Sadler

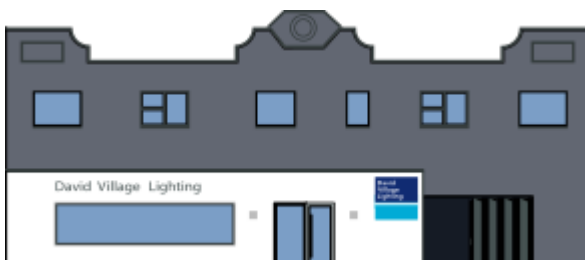
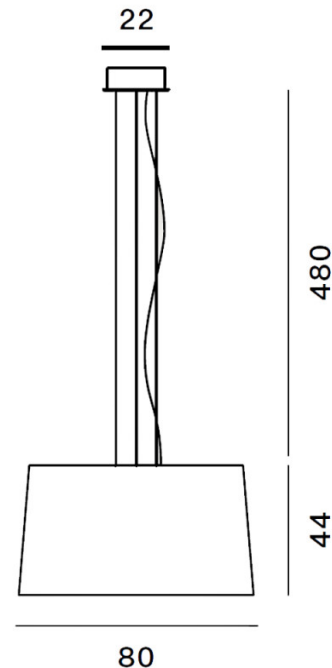
### Foscarini Twice as Twiggy LED Pendant Light

The Twice as Twiggy LED Pendant is a linear design combined with the strong flexibility which characterises the formal elegance and sophistication of the classic [Foscarini Twiggy range](#). The original [Twiggy Pendant](#) becomes oversized with this Twice as Twiggy version, making it perfect for larger spaces and high ceilings, providing a downward directed light that is inviting and effective.

Available in a range of colours, the Twice as Twiggy Pendant Light casts luminous light and provides a modern and sleek aesthetic to spaces. Use alone or in multiple compositions in homes or commercial spaces to make an impact. Display it independently or with other designs across the [Twiggy](#), [Twice as Twiggy](#) or [Twiggy Grid](#) collections.

### PRODUCT SPECIFICATION

<b>Light Source:</b>	81W, 3000K, 8517 Lumens
<b>IP Code:</b>	20
<b>Dimming:</b>	Dimmable via Dali dimming systems or Push to make/ switch dimming. Please consult your electrician, additional wiring may be required on-site.
<b>Dimensions:</b>	Shade: Ø80cm Shade Height: 44cm Ceiling Rose: Ø22cm Cable Length: 480cm



**For all sales and technical enquiries, please contact:**

+44 (0)114 263 4266

[info@davidvillagelighting.co.uk](mailto:info@davidvillagelighting.co.uk)

[www.davidvillagelighting.co.uk](http://www.davidvillagelighting.co.uk)