

**BROKIS®**

## Brokis Flutes Pendant

LA4841

SOURCE: <https://www.davidvillagelighting.co.uk/product/Brokis-Flutes-Pendant/18042>



### PRODUCT DESCRIPTION

**Designer:** Lucie Koldova

### Brokis Flutes Pendant

Handcrafted by Brokis' expert team of glassblowers, the Flutes Pendant is an elegant and contemporary lighting solution. The Brokis Flutes was originally designed for the interior of a hotel, but far exceeded the brand's demands and became a permanent fixture in their product list. The Flutes Pendant conical structure is crafted from glass and resembles a flute, running with this inspiration, the stylized openings serve a practical purpose by allowing the light to be directed at various angles depending on which opening the cable is passed through.

Brokis Flutes Pendant provides a direct but glare-free downlight, perfect for suspension above workspaces, kitchen counters, dining areas or even in a reading nook. Flutes is beautiful as a stand-alone or is often popular in multiples to craft personalised clusters. This light is available in three finishes, with a more muted transparent or smoked glass available as well as a bolder orange glass for more maximalist interiors.

**The Flutes is also available at two other beam angles, please [contact us](#) for more information and pricing.**

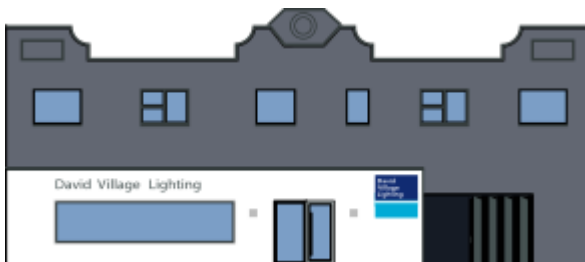
### PRODUCT SPECIFICATION

**Light Source:** 1 x Max 13W E27 LED (excluded)

**IP Code:** 20

**Dimming:** Dimmable via mains phase dimming.

**Dimensions:** Ø11.5cm  
Height: 50cm  
Cable Length: 270cm



**For all sales and technical enquiries, please contact:**

+44 (0)114 263 4266

[info@davidvillagelighting.co.uk](mailto:info@davidvillagelighting.co.uk)

[www.davidvillagelighting.co.uk](http://www.davidvillagelighting.co.uk)