

# LE KLINT

## Le Klint 161 Pendant

LA4719

SOURCE: <https://www.davidvillagelighting.co.uk/product/Le-Klint-161-Pendant/17839>



### PRODUCT DESCRIPTION

**Designer:** Hvidt & Mølgaard

### Le Klint 161 Pendant

The 161 Pendant was designed by Hvidt & Mølgaard in 1969 and originally released under the Danish name Krystal. As the original name suggests, the pendant takes its name from a diamond, crafted from pleated plastic to achieve its unmistakable shape. The plastic foil Le Klint uses for their shades is durable, easy to clean, and UV resistant, maintaining its white colour for many years. Every shade is hand-folded in Denmark, meaning no two pendants are the same and must be handled with care to avoid any breakages. The 161 is suspended from a simple flex, which gives the pendant stability while adding to its weightless appearance.

With an enclosed shade, the 161 Pendant has a warm, diffused light that creates a comforting atmosphere. The glare-free lighting means this pendant can be suspended at both high and low levels, giving it the versatility to be installed in a range of spaces. Install in clusters at different heights to create a captivating display. Reminiscent of an abstract cloud, the pendant's weightless appearance looks striking when hung above a dining room table. In commercial interiors, the 161 Pendant will leave a lasting impression when installed in hotel lobbies or contemporary offices.

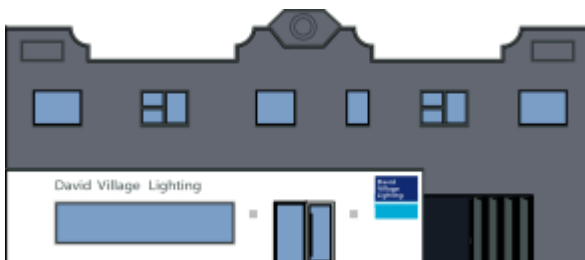
### PRODUCT SPECIFICATION

**Light Source:** 1 x Max 40W E27 (Excluded)

**IP Code:** 20

**Dimming:** Dimmable via mains phase dimming.

**Dimensions:** Ø54cm  
Height: 24cm  
Cable Length: 300cm



**For all sales and technical enquiries, please contact:**

+44 (0)114 263 4266

[info@davidvillagelighting.co.uk](mailto:info@davidvillagelighting.co.uk)

[www.davidvillagelighting.co.uk](https://www.davidvillagelighting.co.uk)