

# LE KLINT

## Le Klint 105 Pendant

LA4716/L

SOURCE: <https://www.davidvillagelighting.co.uk/product/Le-Klint-105-Pendant/17832>



### PRODUCT DESCRIPTION

**Designer:** Mogens Koch

### Model 105 by Le Klint

The 105 design is Mogens Koch's simplified version of the Fruit Lamp by Kaare Klint. In 1945, Mogen designed this stricter lampshade, bearing similar characteristics to the traditional Japanese lanterns. Le Klint 105 has become an iconic design and the lampshade's shape is suitable for high ceiling spaces. The Le Klint 105 pendant is available in two sizes, large or small, and you can choose between a paper or lampshade foil (plastic) material for the shade.

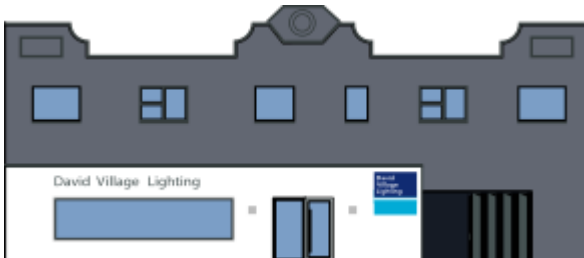
### PRODUCT SPECIFICATION

**Light Source:** 1 x E27 40W max (excluded)

**IP Code:** 20

**Dimming:** Dimmable via mains phase dimming

**Dimensions:** S - Ø26cm, H 33cm  
L - Ø30cm, H 40cm



**For all sales and technical enquiries, please contact:**

+44 (0)114 263 4266

[info@davidvillagelighting.co.uk](mailto:info@davidvillagelighting.co.uk)

[www.davidvillagelighting.co.uk](http://www.davidvillagelighting.co.uk)