

LE KLINT Le Klint 147 Pendant

LA4714

SOURCE: <https://www.davidvillagelighting.co.uk/product/Le-Klint-147-Pendant/17823>



PRODUCT DESCRIPTION

Designer: Esben Klint

Model 147 by Le Klint

Designed by Esben Klint in 1949, the Model 147 pendant light is an adaptation of the famous [Fruit Lantern by Le Klint](#). Opening the bottom of the lampshade, the 147 pendant emits a wider, larger flow of light compared to the original pendant and is not held back by closed lampshade. The 147 light does, however, maintain the pleating of the original lantern meaning the glow is far reaching and soft, allowing for a nice atmosphere.

This pendant works particularly well over tables, thanks to its downward light and looks lovely in both domestic and professional settings. The dainty, hand-crafted pleating makes this pendant light stand out from others, as its delicacy and intriguing texture is unopposed.

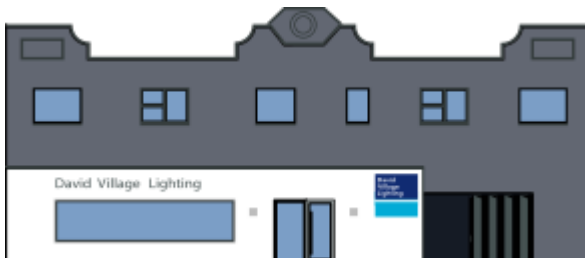
PRODUCT SPECIFICATION

Light Source: 1 x E27 60W max (excluded)

IP Code: 20

Dimming: Dimmable via mains phase dimming

Dimensions: Ø38cm
28cm height
3m cable length



For all sales and technical enquiries, please contact:

+44 (0)114 263 4266

info@davidvillagelighting.co.uk

www.davidvillagelighting.co.uk