

LE KLINT

Le Klint Comet 181 Pendant

LA4710/L

SOURCE: <https://www.davidvillagelighting.co.uk/product/Le-Klint-Comet-181-Pendant/17812>



PRODUCT DESCRIPTION

Designer: Poul Christiansen

Le Klint Comet 181 Pendant

Designed in 2003 by Poul Christiansen, the 181 pendant is distinguished by its straight pleats that form into a rounded end, garnering the nickname the “comet.” The stainless steel detail above the pendant adds an ornamental detail that effectively contrasts against the delicate appearance of the shade. A simple and elegant design with curved and straight lines, the 181 pendant light is an eye-catching light that will add a touch of class to any room.

The pleated shade emits a glare-free, diffused light that adds a cosy ambience to the room. Its sculptural form is well-suited to hanging low in living spaces to create an eye-catching display. In commercial spaces, the Comet is perfect for the hospitality industry, adding a warm and welcoming atmosphere to restaurants or bars. Available in 2 sizes, the comet pendant can be installed individually or in clusters to create a chic and iconic light spectacle.

PRODUCT SPECIFICATION

Light Source: 1 x Max 40W E27 (Excluded)

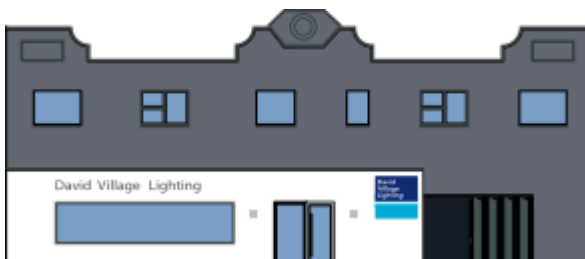
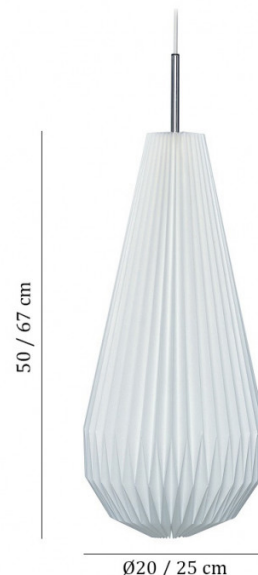
IP Code: 20

Dimming: Dimmable via mains phase dimming.

Dimensions: Small:
Ø20cm
Height: 50cm

Large:
Ø25cm
Height: 67cm

Cable Length: 300cm



For all sales and technical enquiries, please contact:

+44 (0)114 263 4266

info@davidvillagelighting.co.uk

www.davidvillagelighting.co.uk