

LE KLINT

Le Klint La Cloche 145 Pendant

LA4709

SOURCE: <https://www.davidvillagelighting.co.uk/product/Le-Klint-La-Cloche-145-Pendant/17808>



PRODUCT DESCRIPTION

Designer: Aurelién Barbry

La Cloche 145 Pendant by Le Klint

Dubbed “La Cloche” which literally translates as “the bell,” the 145 pendant light was designed by Aurélien Barbry in 2012. With beautiful curved lines, and stunning hand pleats the bell shape of this pendant is unmistakable, lending a delicate touch to the room.

The lovely lampshade diffuses light wonderfully, emanating a warm glow around the room and the open bottom of the shade means you also get a directed downward light. This pendant is perfect for living areas, dining rooms and large spaces, looking particularly good over a table. With three sizes available, this light can look nice both alone and as part of a cluster or row of lights. This elegant, graceful light is a must-have and will please in both domestic and professional settings.

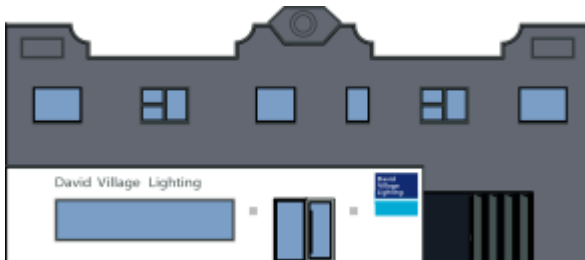
PRODUCT SPECIFICATION

Light Source: M - 1 x E27 40W max (excluded)
L - 1 x E27 60W max (excluded)
XL - 1 x E27 75W max (excluded)

IP Code: 20

Dimming: Dimmable via mains phase dimming

Dimensions: M - Ø25cm, H 35cm
L - Ø30cm, H 44cm
XL - Ø66cm, H 88cm



For all sales and technical enquiries, please contact:

+44 (0)114 263 4266

info@davidvillagelighting.co.uk

www.davidvillagelighting.co.uk