

LE KLINT

Le Klint Swirl 2 Pendant Light

LA4707/2M

SOURCE: <https://www.davidvillagelighting.co.uk/product/Le-Klint-Swirl-2-Pendant-Light/17785>



PRODUCT DESCRIPTION

Designer: Øivind Slaatto

Le Klint Swirl 2 Pendant

Designed by Øivind Slaatto, the Swirl 2 pendant light is part of the [Le Klint Swirl collection](#), a collaborative series that is influenced by the natural world and mathematics. Fascinated by both fractals and a snail's shell, Slaatto has incorporated both to produce the Swirl series. Defined by its spiralled design, the Swirl 2 pendant swivels down in a pine-cone shape, a more elongated version compared to the [Swirl 1](#) and the [Swirl 3](#) pendants.

This pendant is striking and elegant, made to the best quality like all of Le Klint's lights are, as the brand puts hand-made craftsmanship at the forefront of their company ethos. Available in white and a copper-topped colour, the Swirl 2 looks magnificent in any room or space, whether in a cosy domestic lounge or a large commercial area.

PRODUCT SPECIFICATION

Light Source: **Small:** 1 x Max 25W E14 (Excluded)
Medium: 1 x Max 40W E27 (Excluded)
Large: 1 x Max 75W E27 (Excluded)

IP Code: 20

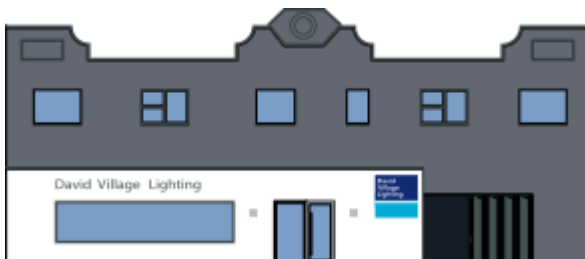
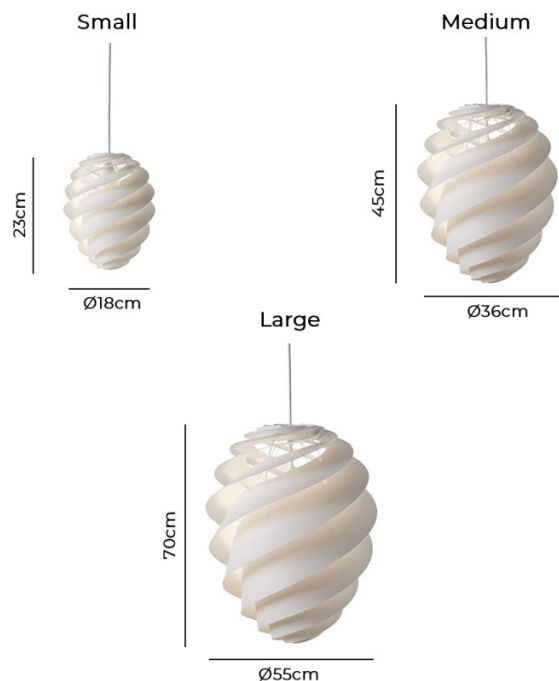
Dimming: Dimmable via mains phase dimming.

Dimensions: **Small:**
Ø18cm
Height: 23cm

Medium:
Ø36cm
Height: 45cm

Large:
Ø55cm
Height: 70cm

Cable Length: 300cm



For all sales and technical enquiries, please contact:

+44 (0)114 263 4266

info@davidvillagelighting.co.uk

www.davidvillagelighting.co.uk