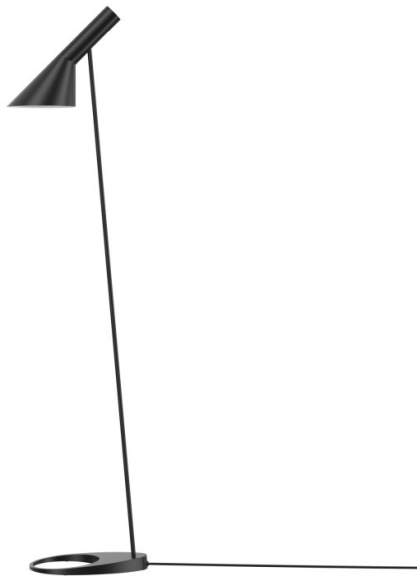


louis poulsen

Louis Poulsen AJ Floor Lamp

LA4686

SOURCE: <https://www.davidvillagelighting.co.uk/product/Louis-Poulsen-AJ-Floor-Lamp/17733>



PRODUCT DESCRIPTION

Designer: Arne Jacobsen

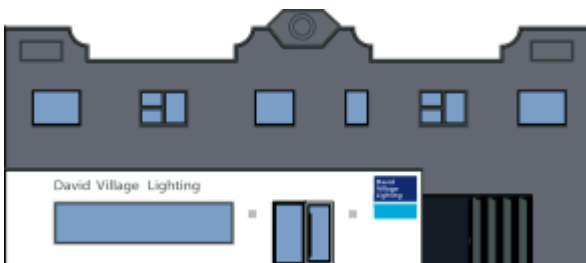
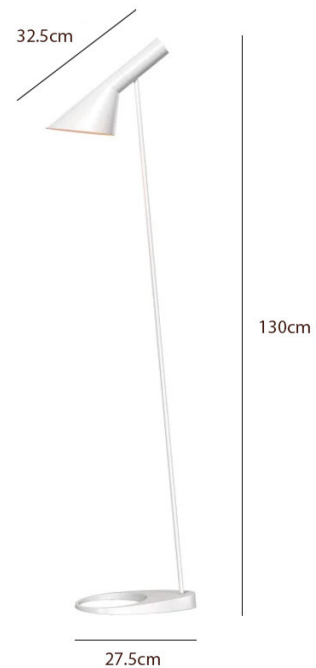
Louis Poulsen AJ Floor Lamp

The Louis Poulsen AJ Floor Lamp was originally made for the SAS Royal Hotel in Copenhagen in 1960 by Arne Jacobsen, who designed everything from the building to the furniture and finishes inside. The AJ Floor Lamp is eye-catching yet subtle within its surroundings, emitting a downward-directed light that is warm and inviting. The shade can be moved and swivelled, allowing you to easily direct the light where needed, making it perfect for reading and tasks.

The AJ Floor Lamp is available in a variety of finishes, including a selection of colours Arne Jacobsen used in his watercolour paintings. All of which can adapt to an array of interiors, both classic and contemporary. The [Louis Poulsen AJ Collection](#) also offers numerous other applications, including table lamps and wall lights.

PRODUCT SPECIFICATION

- Light Source:** 1 x Max 7W E27 LED (Excluded)
- IP Code:** 20
- Dimming:** In-line on/off switch included on cable.
- Dimensions:**
 - Height: 130cm
 - Shade Length: 32.5cm
 - Base: Ø27.5cm
 - Cable Length: 260cm



For all sales and technical enquiries, please contact:

+44 (0)114 263 4266

info@davidvillagelighting.co.uk

www.davidvillagelighting.co.uk