

louis poulsen

Louis Poulsen Above Pendant

LA4671

SOURCE: <https://www.davidvillagelighting.co.uk/product/Louis-Poulsen-Above-Pendant/17714>



PRODUCT DESCRIPTION

Designer: Mads Ogdård

Louis Poulsen Above Pendant Light

The Above Pendant Light was designed by Mads Ogdård, whose design output is usually characterised by simplistic forms, using a classic silhouette for maximum effect. This pendant is no exception, as it has a triangular, bell-like shape with clean, smooth lines that is a beautiful addition to any space.

This pendant light is available in two subtle colours, black or white, so it can seamlessly slip into any interior or design scheme. The light emits a soft, downward light perfect for hanging over tables or surfaces and also illuminates out of the top to reflect off the ceiling. The Above pendant is available in 3 sizes, so you can mix and match sizes for effect or find the right size for a big or small space. Use in many different types of settings to create a chic and timeless look.

PRODUCT SPECIFICATION

Light Source: **Ø175:** 1 x Max 4W E27 LED (Excluded)
Ø250: 1 x Max 6.5W E27 LED (Excluded)
Ø400: 1 x Max 12W E27 LED (Excluded)

IP Code: 20

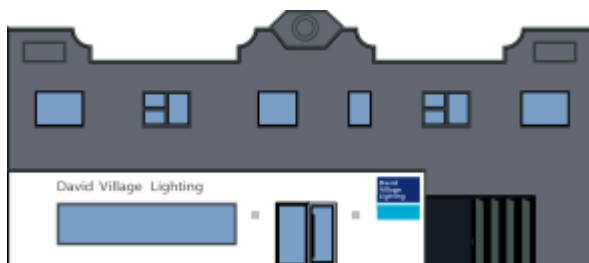
Dimming: Dimmable via mains phase dimming.

Dimensions: **Ø175:**
 Ø17.5cm
 Height: 21cm

Ø250:
 Ø25cm
 Height: 30cm

Ø400:
 Ø40cm
 Height: 48cm

Cable length: 300cm



For all sales and technical enquiries, please contact:

+44 (0)114 263 4266

info@davidvillagelighting.co.uk

www.davidvillagelighting.co.uk