

wästberg

## Wastberg Lampyre w163 T1

LA4606

SOURCE: <https://www.davidvillagelighting.co.uk/product/Wastberg-Lampyre-w163-T1/17558>



### PRODUCT DESCRIPTION

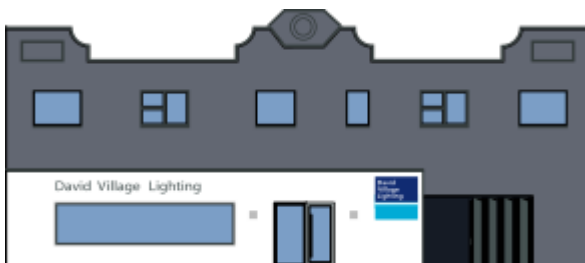
Wastberg Lampyre w163 lampyre is made of two opaline glass parts: a cylindrical base supporting a conic shade, emitting a calming light from base to top. The light can be adjusted from very bright to a phantomatic halo, with the dimmer. Lampyre is the french name for glow-worm, which can be linked to the very natural aspect of this lamp. The w163 lampyre comes in two sizes. The large one is ideal as a solitary piece and will enlighten any space with softness. The smaller one will do very well on a shelf or - following the Swedish warm habit - in a window to shine a friendly light to both the streets and in the home.

### PRODUCT SPECIFICATION

**Light Source:** E14 40W max Excluded

**Dimming:** Dimmer on cable

**Dimensions:** 23.8 cm shade diameter  
31 cm height  
9.3 cm base diameter  
Cable length: 250 cm



**For all sales and technical enquiries, please contact:**

+44 (0)114 263 4266

[info@davidvillagelighting.co.uk](mailto:info@davidvillagelighting.co.uk)

[www.davidvillagelighting.co.uk](http://www.davidvillagelighting.co.uk)