

Resident

## Resident Torchon Pendant LED

LA4461

SOURCE: <https://www.davidvillagelighting.co.uk/product/resident-torchon-pendant-led/17396>



### PRODUCT DESCRIPTION

Resident Torchon Pendant.

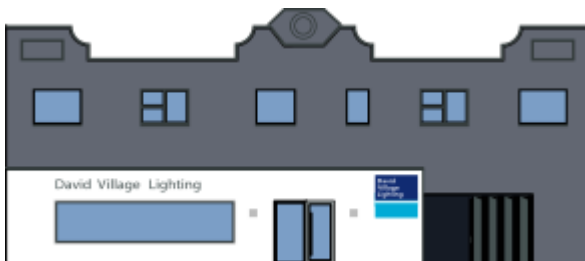
Torchon is a pendant light that exploits the viscous potential of molten glass. In our Auckland workshop a soft spherical vessel of glass is carefully mouth-formed. The piece is finished with a wafer-thin bespoke LED lamp, suspended from a pair of super-fine wires.

### PRODUCT SPECIFICATION

**Light Source:** 2.6W. 2700K, 133lumens

**Dimming:** Dimmable via 1-10V dimming systems. Please consult your electrician, additional wiring may be required on site.

**Dimensions:** H250mm x W250mm x D250mm  
Cable Length- 200mm



**For all sales and technical enquiries, please contact:**

+44 (0)114 263 4266

[info@davidvillagelighting.co.uk](mailto:info@davidvillagelighting.co.uk)

[www.davidvillagelighting.co.uk](http://www.davidvillagelighting.co.uk)