

Resident

LA4453

Resident Echo Spot LED Pendant

SOURCE: <https://www.davidvillagelighting.co.uk/product/Resident-Echo-Spot-LED-Pendant/17387>



PRODUCT DESCRIPTION

Resident Echo Spot Pendant.

Echo is a true fusion of decorative and technical lighting, with snap on lenses which can be customised on-site to change colour temperature, glare and beam angle. The result is a family of high output directional lights, with perfect light distribution. Available in Track, Surface Mounted and Pendant varieties.

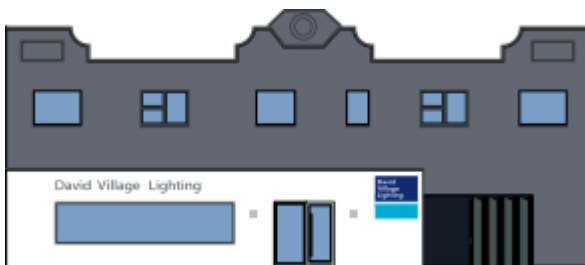
Designed by Flynn Talbot

Also available as a surface mounted and spot light version.

PRODUCT SPECIFICATION

Light Source: 2000K - 2400K - 2700K - 3000K, 1000lumens

Dimensions: L120mm x W120mm x H120mm



For all sales and technical enquiries, please contact:

+44 (0)114 263 4266

info@davidvillagelighting.co.uk

www.davidvillagelighting.co.uk