

innermost

LA4370

## Innermost Membrane Pendant Light

SOURCE: <https://www.davidvillagelighting.co.uk/product/Innermost-Membrane-Pendant-Light/17263>



### PRODUCT DESCRIPTION

**Designer:** Jette Scheib

### Innermost Membrane Pendant Light

Designed by Jette Scheib, the Innermost Membrane pendant light captures the moment of fusion between glass and light. Its smokey hand-blown glass shade, crafted by Czech artisans, creates a striking visual effect with polished gunmetal fittings that add a refined touch.

With three internal bulb sockets, this pendant offers versatility through the choice of dimmable filament or pearl LED bulbs, allowing you to personalise the lighting atmosphere. Membrane's unique design is perfect for upscale interiors, providing a sculptural lighting solution that elevates any space, from dining rooms to hotel lounges.

### PRODUCT SPECIFICATION

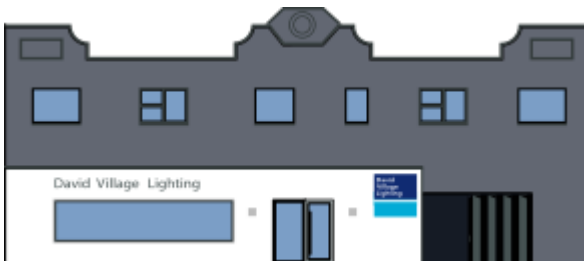
**Light Source:** 3x Max 100W E27 (excluded)

**IP Code:** 20

**Dimming:** Dimmable via mains phase dimming.

**Dimensions:** Height: 46cm  
Shade: Ø28cm

Cable length: 4m



**For all sales and technical enquiries, please contact:**

+44 (0)114 263 4266

[info@davidvillagelighting.co.uk](mailto:info@davidvillagelighting.co.uk)

[www.davidvillagelighting.co.uk](http://www.davidvillagelighting.co.uk)