

Artemide

LA4263

Artemide Pausania LED TW Table Lamp

SOURCE: <https://www.davidvillagelighting.co.uk/product/Artemide-Pausania-LED-TW-Table-Lamp/17082>



PRODUCT DESCRIPTION

Designer: Ettore Sottsass

Pausania LED TW by Artemide

Pausania was designed in 80s by Eric Sottsass, the gofather of contemporary Italian lighting. Pausania is reminiscent of the banker's table lamp which has been re-imagined with LED technology, making it energy efficient and eco-friendly. The lamp is part of the permanent collection in many museums, including the Metropolitan Museum of Art, New York. Pausania is also equipped with the latest Tunable White technology. The Tunable White property allows you to adjust the light intensity and colour temperature depending on the task at hand, changing it to create a different atmosphere.

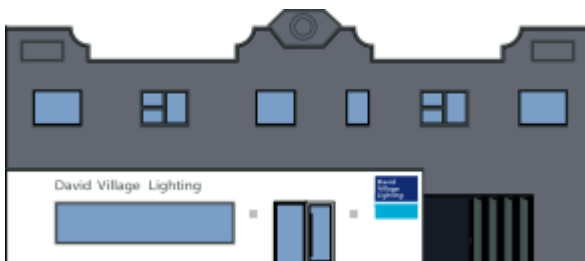
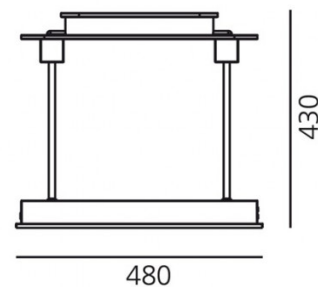
PRODUCT SPECIFICATION

Light Source: 10W, 2700-6500K, 690 lumens

IP Code: 20

Dimming: Integrated dimmer included on the product.

Dimensions: 48 cm width
43 cm height



For all sales and technical enquiries, please contact:

+44 (0)114 263 4266

info@davidvillagelighting.co.uk

www.davidvillagelighting.co.uk