

**Artemide**

## Artemide Patroclo Table Lamp

LA4262

SOURCE: <https://www.davidvillagelighting.co.uk/product/Artemide-Patroclo-Table-Lamp/17081>



### PRODUCT DESCRIPTION

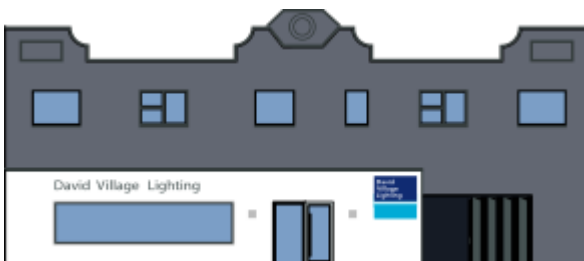
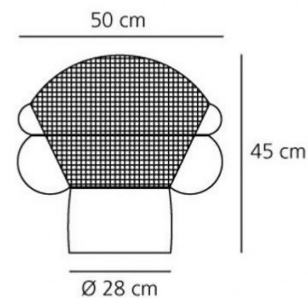
**Designer:** Gae Aulenti

### Patroclo by Artemide

As if prepared for battle, Patroclo is dressed with a wired metal frame. The table lamp was designed by Gae Aulenti in the mid 1970s and was awarded numerous awards, today is it housed in various museum across the world. The glass is blown directly into the metal cage so that it perfectly fits. When switched on, the frame casts a series of rectangular or rhomboid shadows on its surrounding. The lamp shares its name with Patroclus, the companion of Achilles, who fought together in the Trojan War as written in the Greek Iliad. The lamp is an accent piece, complimenting any space both residential and commercial.

### PRODUCT SPECIFICATION

**Light Source:** 1 x 15W LED DIM E27 (excluded)  
**IP Code:** 20  
**Dimming:** Integrated microswitch dimmer included on product.  
**Dimensions:** 45 cm height  
 50 cm width  
 Ø 28 cm base



**For all sales and technical enquiries, please contact:**

+44 (0)114 263 4266

[info@davidvillagelighting.co.uk](mailto:info@davidvillagelighting.co.uk)

[www.davidvillagelighting.co.uk](http://www.davidvillagelighting.co.uk)