

a-emotional light

LA4060

a-emotional light LI LED Wall Light

SOURCE: <https://www.davidvillagelighting.co.uk/product/a-emotional-light-LI-LED-Wall-Light/16841>

PRODUCT DESCRIPTION

Designer: Arturo Alvarez

a-emotional light LI Wall Light

The Li Wall Light has been designed by Arturo Alvarez for a-emotional light. Alvarez often references the natural world in his designs, a theme which is reflected in the Li Wall Light. The curved bands that make up the structure resemble wooden planks, bent and warped by the sea and slowly dried out by the sun and salt. The light from behind the bands peeks through and bathes the surrounding walls with subtle luminosity.

Sustainability is a focal point of The Li Wall Light. The bands are made from pressed cellulose strips which are obtained through an environmentally friendly recycling process. This material has been used in Japan since the 16th century for packaging specifically due to its resistance. The use of an LED light reinforces the theme of sustainability further. The Li Wall light is available in two sizes and can be installed either individually or as multiples, with the combination of different sizes creating an eye-catching yet sleek visual display.

PRODUCT SPECIFICATION

Light Source: **Small:** 11.8W, 3000K, 1805 Lumens
Medium: 23.6W, 3000K, 2768 Lumens

IP Code: 20

Dimming: Dimmable via mains phase dimming.

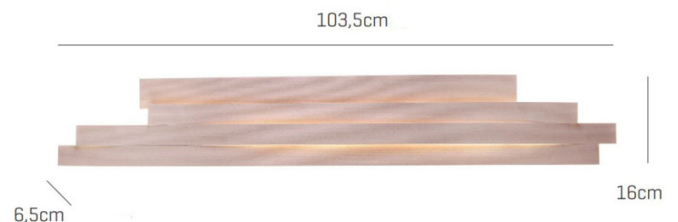
Dimensions: Small:
Length: 51.5cm
Height: 15.5cm
Depth: 6.5cm

Medium:
Length: 103.5cm
Height: 16cm
Depth: 6.5cm

Small



Medium





For all sales and technical enquiries, please contact:

+44 (0)114 263 4266

info@davidvillagelighting.co.uk

www.davidvillagelighting.co.uk