

wästberg

Wastberg Sempé W103 LED S3

LA44047

SOURCE: <https://www.davidvillagelighting.co.uk/product/Wastberg-Semp-W103-LED-S3/16823>



PRODUCT DESCRIPTION

Wastberg Sempé W103S3 pendant lamp can be a single hanging shade or a combination of shades. They can be attached on a long rail for linear combinations or on smaller rails, where they can be joined together like Meccano to create polygons. The rail structure is thin enough to avoid the feeling of a heavy, hanging structure, and the lines are also softened by the round shapes of the shades. These exist in 7 very different tones – bright, soft, clear, dark – and can be arranged in any colour combination.

Glare-protecting Shade and Diffuser

Various colour combinations available, made to order.

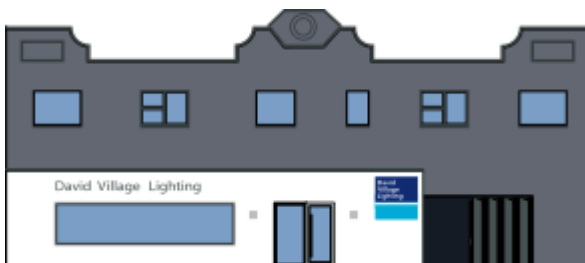
Using LEDs to project the light directly downwards, the shade is not used as a reflector. This gives the option of painting the inside of the shade in the same colour as the outside, without destroying the quality of the light. The result is a beautiful and at the same time, playful effect as a small amount of light lights up the coloured inside of the shade.

PRODUCT SPECIFICATION

Light Source: 10W, 1000 lumens, 2700K per shade

Dimming: Dimmable

Dimensions: Shade Height 15cm
Shade Diameter 28cm
Total Width 118 cm
Cable Length 300 cm



For all sales and technical enquiries, please contact:

+44 (0)114 263 4266

info@davidvillagelighting.co.uk

www.davidvillagelighting.co.uk