

## Original BTC Hatton 1 Grouping of Three Pendants

LA3755

SOURCE: <https://www.davidvillagelighting.co.uk/product/original-btc-hatton-1-grouping-of-three-pendants/16482>



### PRODUCT DESCRIPTION

### Original BTC Hatton 1 Grouping of Three Pendants

Original BTC have created the [Hatton collection](#) of lighting products which have beautifully intricate bone china shades and are available in other suspension forms and table, floor and wall lamps. Original BTC use highly skilled and labour intensive processes in their factory in Stoke-On-Trent and bone china is transformed into multi faceted, symmetrical, gem-like forms.

The Hatton 1 grouping of three pendants is an iconic statement piece and is perfect as a central lighting source. When switched off the Hatton 1 group of three pendants has an angular sculptural beauty, and when switched on they provide warm, ambient lighting with striking lines and shadows. Each Hatton pendant from Original BTC comes with a complementing faceted bone china ceiling rose, with a contrasting black cotton braided flex, providing a contemporary edge to the pendants.

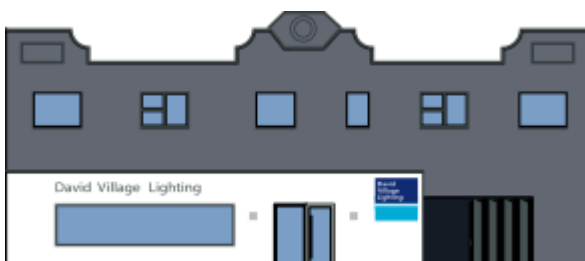
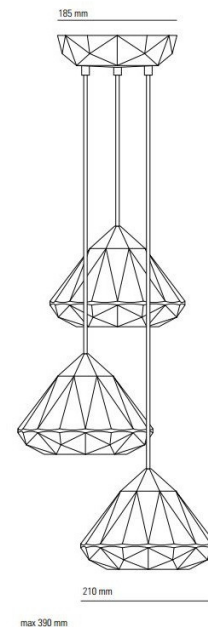
### PRODUCT SPECIFICATION

**Light Source:** 3x E27 60W max. (excluded)

**IP Code:** 20

**Dimming:** Dimmable via mains phase dimming systems

**Dimensions:** Shade: H 15cm W 21cm  
Total width: 39cm  
Ceiling canopy: 18.5cm  
Cable length: 200cm



**For all sales and technical enquiries, please contact:**

+44 (0)114 263 4266

[info@davidvillagelighting.co.uk](mailto:info@davidvillagelighting.co.uk)

[www.davidvillagelighting.co.uk](http://www.davidvillagelighting.co.uk)