

MUUTO

LA3708

Muuto Fiber Armchair - Normal ShellSOURCE: <https://www.davidvillagelighting.co.uk/product/Muuto-Fiber-Armchair---Normal-Shell/16375>**PRODUCT DESCRIPTION****Designer:** Iskos-Berlin**Muuto Fiber Armchair with Normal Shell**

The Fiber Armchair by Muuto is the product of Iskos-Berlin, a Copenhagen-based design duo that has exhibited at many design museums internationally, including the Danish Design Museum and MoMA.

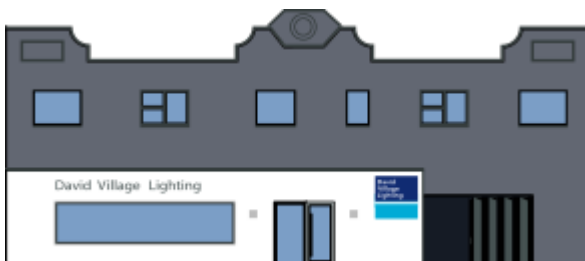
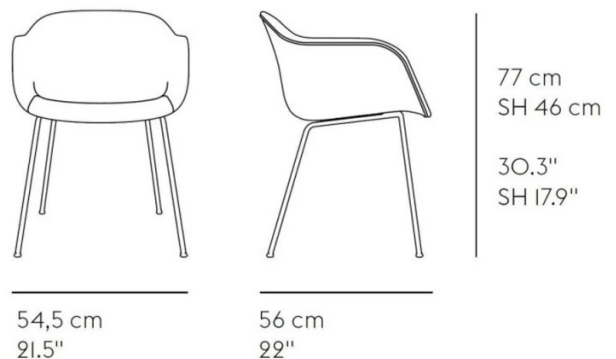
The armchair, like the rest of the [Fiber](#) collection, is an interpretation of the classic shell chair, maximising on the comfort of the shell chair's embracing curves and lines whilst developing an innovative composite material. The chair is made with a combination of plastic and 25% wood fibres, which gives the illusion of simplicity from afar but complexity up close. By using fabric and foam for the inside of the chair, Iskos-Berlin has created a simplistic and functional chair that is both comfortable and innovative.

The legs are made from solid oak wood which is the final touch in combining man-made and natural resources to create a truly original chair that can be used in many rooms.

For further details on other available styles and finishes please [contact us](#).

PRODUCT SPECIFICATION

Dimensions: Width: 54.5cm
Depth: 56cm
Height: 77cm



For all sales and technical enquiries, please contact:

+44 (0)114 263 4266

info@davidvillagelighting.co.uk

www.davidvillagelighting.co.uk