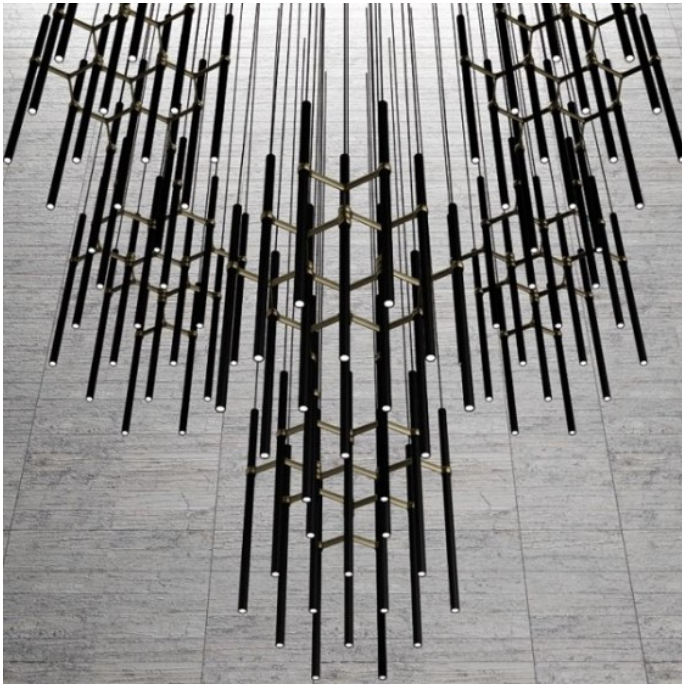




CL0801

Centrelight Honeycomb Tubular Modules

SOURCE: <https://www.davidvillagelighting.co.uk/product/centrelight-honeycomb-tubular-modules/16364>



PRODUCT DESCRIPTION

Centrelight Honeycomb Tubular Modules
Geometric compositions. Endless possibilities to create large space luminaires for public spaces or hotels.
Black body with white, chrome, black or gold supports.

Lamp:
2,7W monochrome LEDs.
3000K=Warm White
4000K=Neutral White

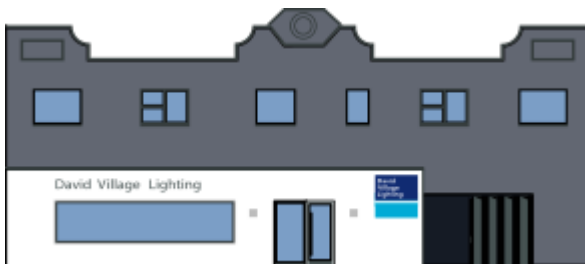
Optics of the projector:
TUBES-25 with prismatic lens:
N 15°, S 25°, M 40°

Digital dimmable electronic (DALI), analogue dimmable electronic (1-10V) and 1h and 3h emergency electronic (remote)

IP20

For further specification assistance please [contact us](#).

PRODUCT SPECIFICATION



For all sales and technical enquiries, please contact:

+44 (0)114 263 4266

info@davidvillagelighting.co.uk

www.davidvillagelighting.co.uk