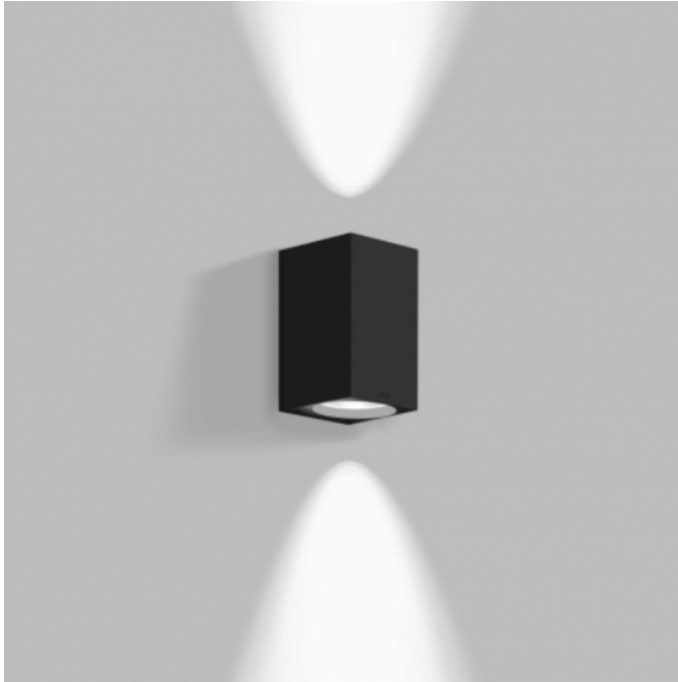




Bega 33592 LED Wall Large

LA3681

SOURCE: <https://www.davidvillagelighting.co.uk/product/Bega-33592-LED-Wall-Large/16324>



PRODUCT DESCRIPTION

Bega 33592 LED wall large available in a graphite, white or silver finish. Luminaire made of aluminium alloy, aluminium and stainless steel. Clear safety glass. Silicone gasket. Reflector made of anodised pure aluminium.

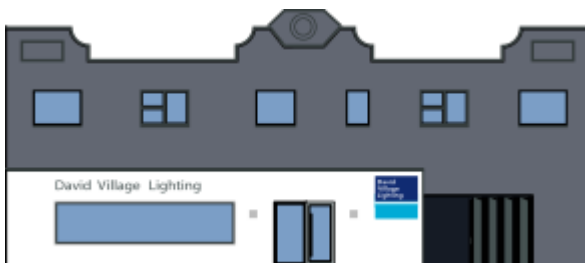
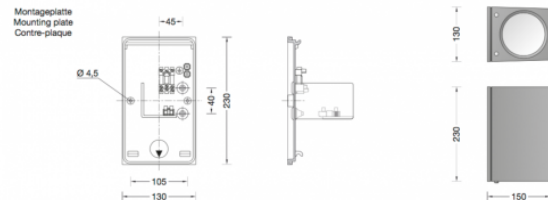
Wall luminaire with two-sided light output. For illumination and design tasks in architecture. The light directed downwards is intended to illuminate the wall and the horizontal surface in front of it. The light directed upwards is intended to illuminate the wall and ceiling surfaces.

The used LED technique offers durability and optimal light output with low power consumption at the same time.

Suitable for interior or exterior use.

PRODUCT SPECIFICATION

Light Source: 19.3W, 3000K, 1448 Lumens
OR
19.3W, 4000K, 1525 Lumens
IP Code: 64
Dimming: DALI dimmable.



For all sales and technical enquiries, please contact:

+44 (0)114 263 4266

info@davidvillagelighting.co.uk

www.davidvillagelighting.co.uk