

FLOS

## Flos Mod. 607 Table Lamp

LA3489

SOURCE: <https://www.davidvillagelighting.co.uk/product/flos-mod-607-table-lamp/15999>



### PRODUCT DESCRIPTION

**Designer:** Gino Sarfatti

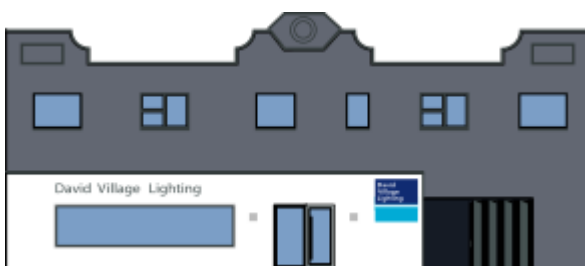
Flos Mod. 607 Table Lamp

Model 607 embodies the close link between formal experimentation and technical innovation in Gino Sarfatti's work. This design stemmed from the need to house the new halogen source with its transformer. Two simple built-in elements: a flat disc acting as reflector and an inclined parallelepiped as base, which gives the lamp stability. The special crackled paint finish is another of the piece's original features. Timeless modernity, sobriety and elegance characterise this avant-garde article. Table lamp emitting direct light, made up of two elements that are mechanically snapped together: a disc-shaped diffuser with a truncated cone section in painted aluminium and craquelé finish, and a slanted parallelepiped base in painted aluminium, which gives the lamp stability. The switch with dimmer is positioned on the front at the foot of the base.

Cord length: 2000mm

Lamp 1 x 18watt LED, 2700K, 1200lm, CRI 85

### PRODUCT SPECIFICATION



**For all sales and technical enquiries, please contact:**

+44 (0)114 263 4266

[info@davidvillagelighting.co.uk](mailto:info@davidvillagelighting.co.uk)

[www.davidvillagelighting.co.uk](http://www.davidvillagelighting.co.uk)