



## Gubi Collar Pendant

LA3484

SOURCE: <https://www.davidvillagelighting.co.uk/product/Gubi-Collar-Pendant/15987>



### PRODUCT DESCRIPTION

**Designer:** Sebastian Herkner

### Collar Pendant Light by Gubi

His first design for Gubi, the Collar Pendant by multi award-winning designer Sebastian Herkner is truly iconic and combines both traditional techniques and a modern eye. Using mouth-blown glass for the diffuser and steel for the striking “collar” shade, Herkner has created a light that gives a soft, warm glow paired with a timeless and unique shape.

With the ability to dim (using a dimmable bulb), this light is best placed in lounging areas or as a feature light overhanging a table to create a welcoming atmosphere. The option of 2 sizes and 5 different colours means you could buy multiple pendants to cluster together to create an elegant yet playful light feature in your home.

### PRODUCT SPECIFICATION

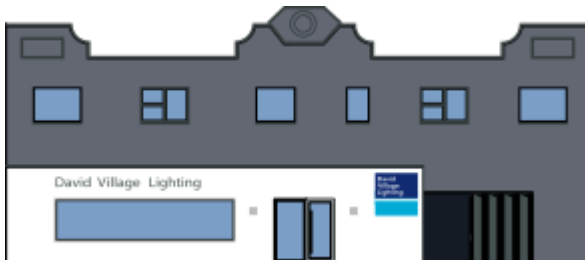
**Light Source:** Small - 1 x max 28W E27 (excluded)  
Large - 1 x max 60W E27 (excluded)

**IP Code:** 20

**Dimming:** Dimmable via mains phase dimming

**Dimensions:** Small - Ø30cm, H 14.3cm  
Large - Ø42cm, H 20.2cm

400cm drop



**For all sales and technical enquiries, please contact:**

+44 (0)114 263 4266

[info@davidvillagelighting.co.uk](mailto:info@davidvillagelighting.co.uk)

[www.davidvillagelighting.co.uk](http://www.davidvillagelighting.co.uk)