

ANGLEPOISE®

Anglepoise Original 1227 Wall Light

LA3183

SOURCE: <https://www.davidvillagelighting.co.uk/product/Anglepoise-Original-1227-Wall-Light/15607>

PRODUCT DESCRIPTION

Designer: George Carwardine

Anglepoise Original 1227 Wall Light

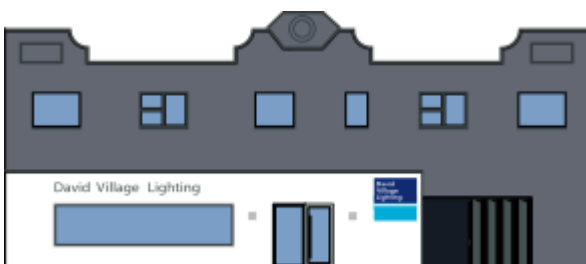
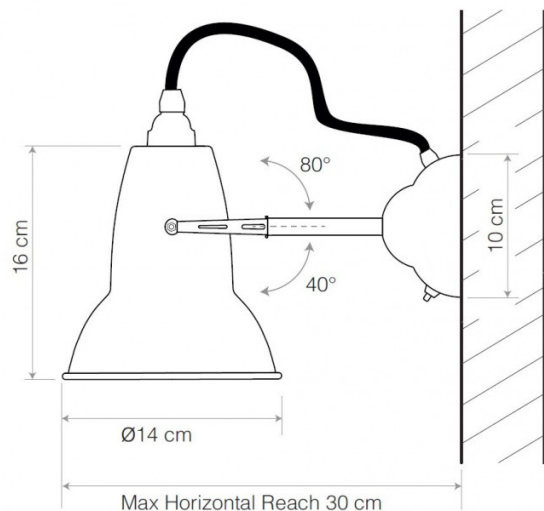
The Anglepoise Original 1227 Wall Light is part of the [Original 1227 Collection](#), first released in 1935 as a table lamp. This reimagining of a classic design sees the traditional shade shape mounted as a wall light for a functional light that can be directed as required. The wall light is available in three finishes, Dove Grey, Jet Black, and Linen White, and features a toning fabric-covered cord and chrome fittings for an additional decorative touch.

Install the Original 1227 Wall Light above a shelf or on a gallery wall for a flexible lighting solution that lets you angle the shade to focus on a particular item or wash the whole display with light. Install in pairs to frame a picture, doorway or bed while providing a spotlight or functional reading light. In commercial spaces, the Original 1227 Wall Light suits hotels, office spaces, and cafes.



PRODUCT SPECIFICATION

- Light Source:** 1 x Max 10W E27 (Excluded)
- IP Code:** 20
- Dimming:** Integrated on/off switch on the product.
- Dimensions:**
 - Shade: Ø14cm
 - Shade Height: 16cm
 - Maximum Reach (from wall to shade): 30cm
 - Wall Plate: Ø10cm



For all sales and technical enquiries, please contact:

+44 (0)114 263 4266

info@davidvillagelighting.co.uk

www.davidvillagelighting.co.uk