

Prandina Teodora Pendant

LA3156

SOURCE: <https://www.davidvillagelighting.co.uk/product/prandina-teodora-pendant/15584>



PRODUCT DESCRIPTION

Designer: Sergio Prandina

Teodora Pendant by Prandina

Prandina's Teodora is an elegant, minimalist [pendant lamp](#) with a simple, two-part design: a glass upper element sits atop a painted metal lampshade, allowing light to be emitted both directly downwards and indirectly around a room, providing both spotlighting and ambience at the same time. All of the shades come with a white painted layer on the inside to create a warm glow. The Glossy Black colour also has a Gold Leaf inside colour option for a touch more luxury.

Company founder Sergio Prandina has designed a range of sizes, finishes, and cable colours to ensure that Teodora can be made to suit just about any aesthetic. Equally at home in a kitchen or an office as it is in a living room or hotel lobby, this discreet yet distinctive suspension lamp is sure to meet your lighting needs.

An inverse metal-on-glass version – known as the [Prandina Teodora Glass](#) – is also available.

PRODUCT SPECIFICATION

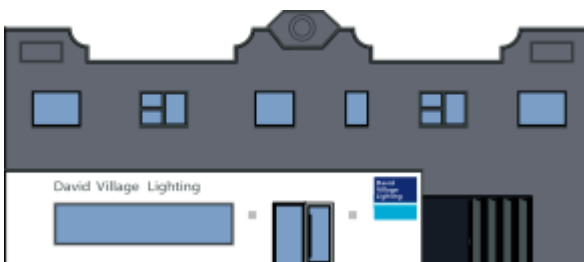
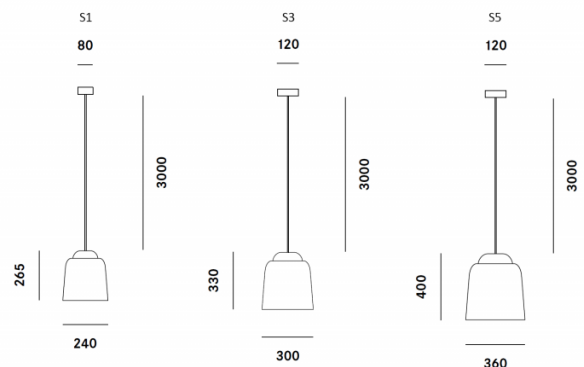
Light Source: 1 x E27 100W max (excluded)

IP Code: 20

Dimming: Dimmable via mains phase dimming

Dimensions: S1 - Ø24cm, H 26.5cm
S3 - Ø30cm, H 33cm
S5 - Ø36cm, H 40cm

S1 - Ø8cm ceiling rose
S3/S5 - Ø12cm ceiling rose
3m cable length



For all sales and technical enquiries, please contact:

+44 (0)114 263 4266

info@davidvillagelighting.co.uk

www.davidvillagelighting.co.uk