

LA3145

SOURCE: <https://www.davidvillagelighting.co.uk/product/Prandina-Gong-Pendant/15572>



**PRODUCT DESCRIPTION**

**Designer:** Sergio Prandina

**Gong Pendant by Prandina**

Prandina's Gong is an attractive, contemporary pendant light which exemplifies the Bassanese company's ability to "think with glass".

Designed by founder Sergio Prandina, Gong was inspired by the shape of traditional Chinese lanterns and the way in which they contain, protect, and project light. External engravings separate the decorated upper part of the blown glass diffuser from the lower part, which is left clear to emphasise the purity of glass. A variety of decorative finishes are available for the upper part which make use of Prandina's advanced painting, mirroring, and metallizing techniques to ensure that Gong is at home in a wide range of environments, but especially in warm, relaxed settings like bedrooms, restaurants, and hotel lobbies.

Gong is available in three sizes. The smallest size is available as a three-light installation with either a round or bar-shaped ceiling rose; please [contact us](#) for more details about these variants, including prices. An [LED version](#) is also available, while the wider collection includes a [table lamp](#), a [wall lamp](#), and a [mini pendant](#).

**PRODUCT SPECIFICATION**

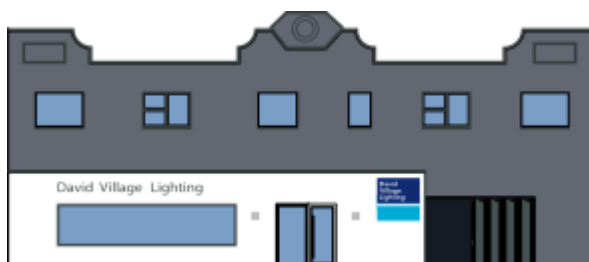
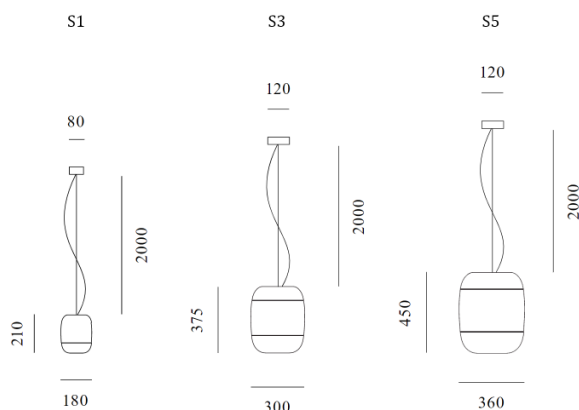
**Light Source:** S1 - 1 x HSGST G9 60W max (excluded)  
S3 - 1 x IAA/F E27 150W max (excluded)  
S5 - 1 x IAA/F E27 150W max (excluded)

**IP Code:** 20

**Dimming:** Dimmable via mains phase dimming

**Dimensions:** S1 - Ø18cm, H 21cm  
S3 - Ø30cm, H 37.5cm  
S5 - Ø36cm, H 45cm

S1 - Ø8cm ceiling rose  
S3/S5 - Ø12cm ceiling rose  
200cm cable length



**For all sales and technical enquiries, please contact:**

+44 (0)114 263 4266

[info@davidvillagelighting.co.uk](mailto:info@davidvillagelighting.co.uk)

[www.davidvillagelighting.co.uk](http://www.davidvillagelighting.co.uk)