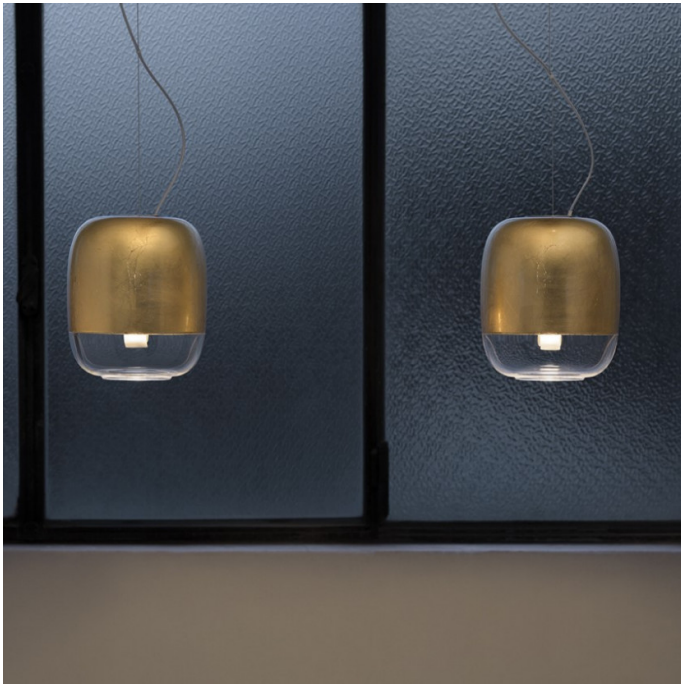


## Prandina Gong LED Pendant

LA3144

SOURCE: <https://www.davidvillagelighting.co.uk/product/prandina-gong-led-pendant/15571>



### PRODUCT DESCRIPTION

**Designer:** Sergio Prandina

### Gong LED Pendant by Prandina

Modelled after a traditional Chinese lantern, Gong is an elegant blown-glass pendant which celebrates the versatility of glass.

Its diffuser is divided into two parts: a crystal clear lower part is complemented by an upper part which is decorated either by painting, mirroring, or metallizing to create a contrast which allows us to see the beauty in both types of glass. The integrated LED light source sets the scene similarly beautifully in both wide open commercial, office, or living spaces and smaller, more intimate environments.

The Gong LED Pendant is available in 3 sizes and as a [non-LED](#) version. The smallest size is available in a three-light variant with multiple ceiling rose designs; please [contact us](#) for further details. A [table lamp](#), [wall lamp](#), and [mini pendant](#) are also available.

**This version of the Gong LED pendant is non-dimmable but a dimmable version is available on request. Please [contact us](#) for more information.**

### PRODUCT SPECIFICATION

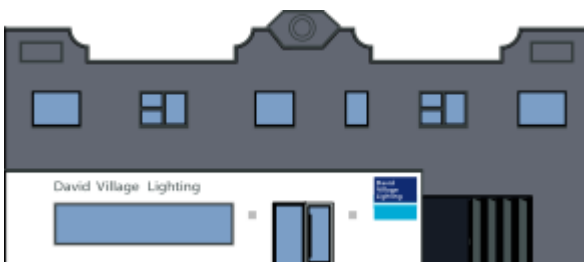
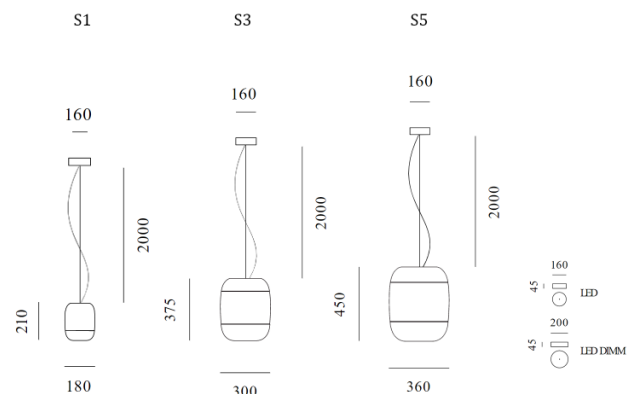
**Light Source:** S1 - 4.8W, 3000K, 720 lumens  
S3 - 8.5W, 3000K, 1044 lumens  
S5 - 13.2W, 3000K, 1417 lumens

**IP Code:** 20

**Dimming:** Non-dimmable

**Dimensions:** S1 - Ø18cm, H 21cm  
S3 - Ø30cm, H 37.5cm  
S5 - Ø36cm, H 45cm

Ø16cm ceiling rose  
200cm cable length



**For all sales and technical enquiries, please contact:**

+44 (0)114 263 4266

[info@davidvillagelighting.co.uk](mailto:info@davidvillagelighting.co.uk)

[www.davidvillagelighting.co.uk](http://www.davidvillagelighting.co.uk)