



Bocci 21 Series Chandeliers

LA3137

SOURCE: <https://www.davidvillagelighting.co.uk/product/Bocci-21-Series-Chandeliers/15557>



PRODUCT DESCRIPTION

Designer: Omer Arbel

21 Series Chandelier Light by Bocci

A part of the [Bocci 21 series](#), the 21 Series chandelier lights are made up of either 11, 14, 21, 26, 36 or 50 individual pendants configured on either a square, rectangular and round ceiling canopy with non-adjustable cables. The overall effect of the chandeliers is spectacular and magnificent and will be a beautiful addition to any private or public space.

Each lampshade is made from a glass diffuser that is wrapped by a sheet of porcelain, producing an ethereal and natural aesthetic. The design was created by Omer Arbel who was inspired by how barnacles look on rock surfaces. The shade produces a warming glow, that is both ambient and effective. Use the chandelier as a main light in big spaces or use over tables and surfaces to provide directed lighting. Bocci provides the light source upon purchase, choose between the **LED 1W** or the **Xenon 20W** light bulb.

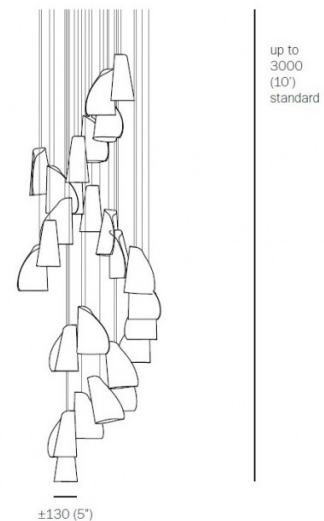
Please Note: All Bocci Suspension Lights come with a white ceiling canopy as standard. Other finishes are available, please [contact us](#) for more information and pricing.

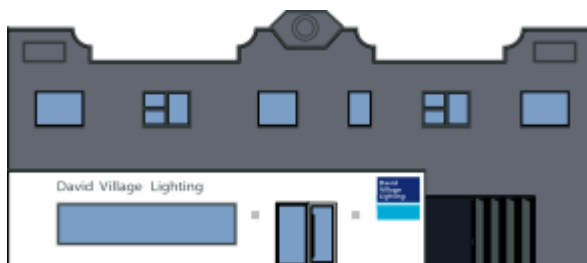
PRODUCT SPECIFICATION

Light Source: Max 20W 2700K G4 Xenon (included)
or
Max 1W 2700K G4 LED (included)

Dimming: Dimmable using trailing edge dimming.

Dimensions: Shade: Ø13cm
Max Cable Length: 300cm





For all sales and technical enquiries, please contact:

+44 (0)114 263 4266

info@davidvillagelighting.co.uk

www.davidvillagelighting.co.uk