

Artemide

Artemide Melete LED Wall Light

LA3114

SOURCE: <https://www.davidvillagelighting.co.uk/product/Artemide-Melete-LED-Wall-Light/15540>



PRODUCT DESCRIPTION

Designer: Pio & Tito Toso

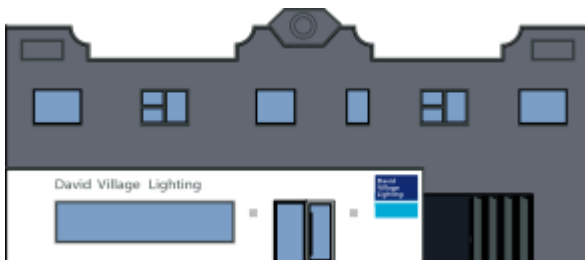
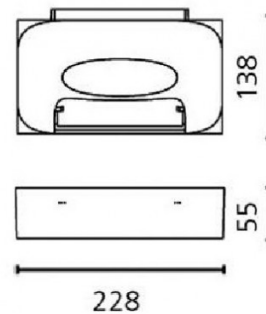
Melete LED by Artemide

Designs by the brothers Pio and Tito Toso tend to have a poetic sensation and a power that is meant to evoke. Their study on lighting and design is all about simplicity, one that is not trivial or frigid.

Melete is one of their designs, a single piece made of die-cast aluminium, and its shape is meant to interact with the interior architecture of the room. The internal part is carved and emits a warm light, both upwards and downwards. Melete wall light is available in a white finish but you can select the colour temperature, either 2700K or 3000K.

PRODUCT SPECIFICATION

Light Source:	Warmest White (2700K) 27W, 2700K, 2047 lumens Warm White (3000K) 27W, 3000K, 2191 lumens
IP Code:	20
Dimming:	Dimmable with Push dimming systems only. Please consult your electrician, additional wiring may be required on site.
Dimensions:	22.8 cm width 5.5 cm height 13.8 cm depth



For all sales and technical enquiries, please contact:

+44 (0)114 263 4266

info@davidvillagelighting.co.uk

www.davidvillagelighting.co.uk