



## -Luceplan Costanzina Wall Lamp

LA9087B

SOURCE: <https://www.davidvillagelighting.co.uk/product/luceplan-costanzina-wall-lamp/15525>



### PRODUCT DESCRIPTION

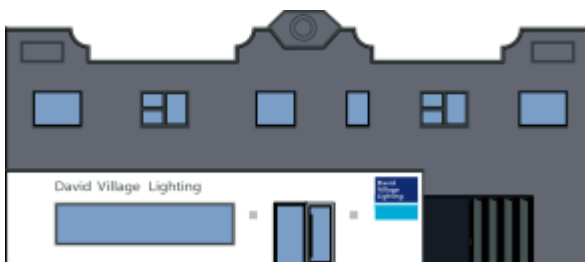
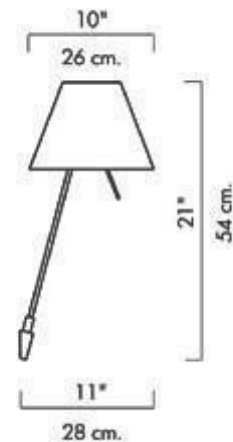
**Designer:** Paolo Rizzatto

The wall lamp can be mounted regardless of whether a light socket happens to be available. It is in fact fitted with a cable that can be lowered to the nearest mains plug. The on-off switch is released by the rod.

The light and washable shade, resting on two points of balance and therefore capable of oscillating if bumped, diffuses a warm and pleasant light. Its unmistakable, subtle but structurally solid profile fits naturally into any interior.

This version is available in a multi coloured finish. Wall brackets are included.

### PRODUCT SPECIFICATION



**For all sales and technical enquiries, please contact:**

+44 (0)114 263 4266

[info@davidvillagelighting.co.uk](mailto:info@davidvillagelighting.co.uk)

[www.davidvillagelighting.co.uk](http://www.davidvillagelighting.co.uk)