

FLOS

LA7426

## Flos Chrysalis Cocoon Floor Lamp

SOURCE: <https://www.davidvillagelighting.co.uk/product/Flos-Chrysalis-Cocoon-Floor-Lamp/14641>

### PRODUCT DESCRIPTION

**Designer:** Marcel Wanders

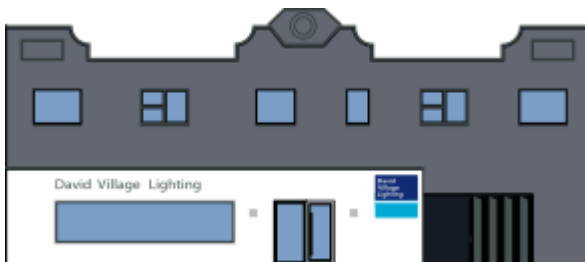
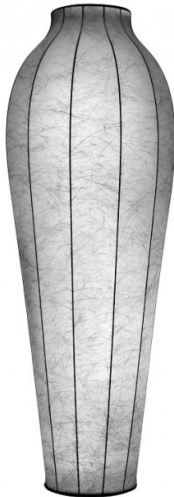
### Chrysalis Floor Light by Flos

The large scale Chrysalis floor light, by designer Marcel Wanders, is an elegant light source reminiscent of a flower vase. When in use, the Chrysalis' light output is projected upwards, casting a beautiful floral pattern onto the ceiling and surrounding walls, typical of the Wanders design aesthetic. When not in use the Chrysalis floor lamp's impressive stature retains its decorative impact. With two independent light sources, the first lights up the body and is dimmable with an on/off switch; the second is at the top of the body.

This floor light uses one of the Flos brand's most distinctive materials: the 'cocoon' resin used in the 1960s by the Castiglioni brothers and by Tobia Scarpa. Marcel Wanders uses this resin for its adaptability and high strength, allowing the floor lamp to gain its XXL volume. This almost 'organic' material evokes both the lightness of a fabric, the warm texture of the paper and the chrysalis of a butterfly in the making.

### PRODUCT SPECIFICATION

**Light Source:** 1 x GY6.35 65W max + 1 x G5 80W max (excluded)  
**IP Code:** 20  
**Dimming:** In line dimmer included on cable  
**Dimensions:** Ø33.7cm top  
 200cm height  
 Ø38.3cm base  
 285cm cable length



**For all sales and technical enquiries, please contact:**

+44 (0)114 263 4266

[info@davidvillagelighting.co.uk](mailto:info@davidvillagelighting.co.uk)

[www.davidvillagelighting.co.uk](http://www.davidvillagelighting.co.uk)