

Artemide

Artemide Talo LED Wall Light

LA7345

SOURCE: <https://www.davidvillagelighting.co.uk/product/Artemide-Talo-LED-Wall-Light/14551>



PRODUCT DESCRIPTION

Designer: Neil Poulton

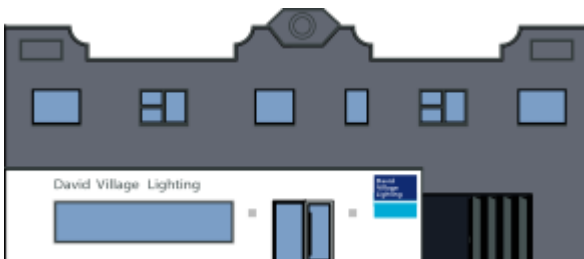
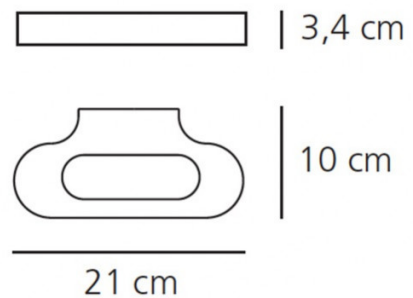
Talo LED by Artemide

A classic and one of Artemide's bestsellers, the Talo LED wall light was designed by Neil Poulton. The Talo collection won several awards in 2002, including the iF Design Award, Compasso d'Oro/ADI-Selezione and Red Dot Design Award. Talo lights compliment any space, whether commercial or residential, adding a contemporary touch.

A discrete uplight, which houses an integrated LED source making it energy efficient and eco-friendly. The Talo mini light is available in four colour options: chrome, black, silver or white and is available in a choice of two colour temperatures (warm and warmest white). The Talo family includes several other wall lights, of different sizes/lengths, as well as a suspension light with 90, 120 or 150 cm length.

PRODUCT SPECIFICATION

- Light Source:** 20W, 2700K, 1674 lumens
or
20W, 3000K, 1991 lumens
- IP Code:** 20
- Dimming:** Push to make/ switch dimming, dimmable using push to make switches. Please consult your electrician, additional wiring may be required on site.
- Dimensions:** 21 cm width
10 cm depth
4.2 cm height



For all sales and technical enquiries, please contact:

+44 (0)114 263 4266

info@davidvillagelighting.co.uk

www.davidvillagelighting.co.uk