

FRITZ HANSEN

Fritz Hansen Lullaby Pendant

LA7095

SOURCE: <https://www.davidvillagelighting.co.uk/product/Fritz-Hansen-Lullaby-Pendant/14276>



PRODUCT DESCRIPTION

Designer: Monica Förster

Lullaby Pendant Light by Fritz Hansen

The Lullaby pendant light was designed by Monica Förster in 2014 and is characterised by its pentagonal shape. The lampshade is made from polyethylene which is translucent, becoming lighter and more clear as the light is turned on. The shade is shaped and held by ash wood pieces which give it an organic and natural look. The shade also diffuses the light beautifully, emitting a soft glow and the bottom tapers at the end to make sure the light is glare-free.

The Lullaby pendant is available in 3 sizes so you can mix and match to create a varied cluster or find the right size to fit well in your interior. The interesting design makes this pendant light fresh and contemporary and will look good in a wide variety of settings. The downward light makes this pendant perfect for hanging over tables and will look particularly good in kitchens, lounges and airy, light spaces.

PRODUCT SPECIFICATION

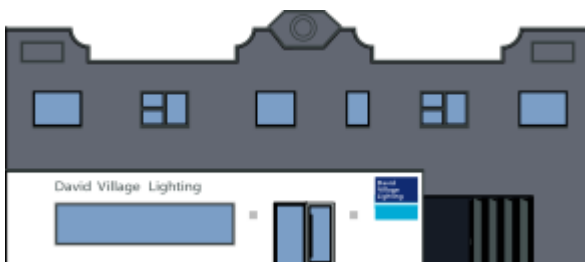
Light Source: P1 - 1 x E27 46W max (excluded)
P2/P3 - 1 x E27 100W max (excluded)

IP Code: 20

Dimming: Dimmable via mains phase dimming

Dimensions: P1 - Ø24cm, H 22.6cm
P2 - Ø43cm, H 39.6cm
P3 - Ø56cm, H 58.8cm

P1/P2 - 3m cable length
P3 - 6m cable length



For all sales and technical enquiries, please contact:

+44 (0)114 263 4266

info@davidvillagelighting.co.uk

www.davidvillagelighting.co.uk