

Kartell

Kartell Rifly LED Pendant Light

LA7044

SOURCE: <https://www.davidvillagelighting.co.uk/product/Kartell-Rifly-LED-Pendant-Light/14214>



PRODUCT DESCRIPTION

Designer: Ludovica & Roberto Palomba

Rifly LED Pendant Light by Kartell

Designed by Ludovica+Roberto Palomba, the Rifly pendant was originally made as part of the Kartell by Laufen collection, a project specifically focussed on bathroom design. Though intended for use in the bathroom, this hanging lamp can be used everywhere in the home and will add a touch of decadence to your décor.

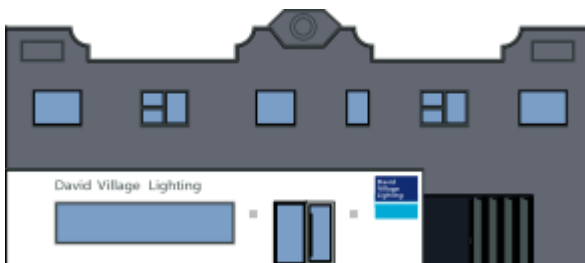
Available in chrome, copper, gold and crystal finishes and with an integrated LED, the Rifly light's captivating yet functional design makes it very versatile. With the choice of three lengths, you can also create a stunning light feature by clustering them together, whether as a centrepiece over your dining room table or as an atmospheric bathroom light.

PRODUCT SPECIFICATION

Light Source: 10W, 2700K

IP Code: 44

Dimensions: Large - Ø 8cm, 90cm, 100-290cm drop
Medium - Ø 8cm, 60cm, 70-260cm drop
Small - Ø 8cm, 30cm, 40-230cm drop



For all sales and technical enquiries, please contact:

+44 (0)114 263 4266

info@davidvillagelighting.co.uk

www.davidvillagelighting.co.uk