



LA6957

## &Tradition Mega Bulb SR2 Pendant

SOURCE: <https://www.davidvillagelighting.co.uk/product/Tradition-Mega-Bulb-SR2-Pendant/14107>



### PRODUCT DESCRIPTION

**Designer:** Sofie Refer

### Mega Bulb SR2 Pendant Light by &Tradition

After the success of the &Tradition Bulb SR1 in 2001, designer Sofie Refer developed the bigger Mega Bulb SR2 pendant in 2006. Using the same mouth-blown technique, the Mega Bulb pendant light is made from beautiful transparent glass, now with gold lustre and silver lustre colours.

Using a traditional technique to create a modern and contemporary light, Refer embodies the ethos of &Tradition with the Mega Bulb pendant. Thoroughly elegant, each pendant is completely unique because of the way it is made and the bigger size means the Mega Bulb has a further reaching glow. This pendant works well as a decorative and ambient light for many rooms in the house and looks best as a series or cluster of pendants. Mix and match with the smaller Bulb pendant and various colour finishes to create a magnificent and chic light feature.

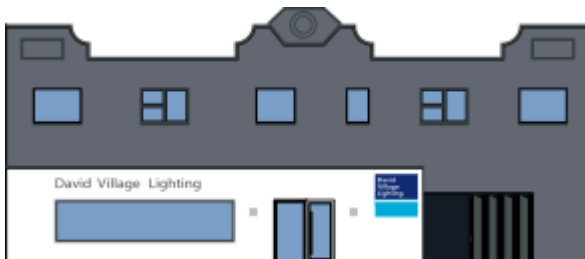
### PRODUCT SPECIFICATION

**Light Source:** 1 x Max 5W LED E27 (excluded)

**IP Code:** 20

**Dimming:** Dimmable via mains phase dimming.

**Dimensions:** Ø18cm  
Height: 23cm  
Cable Length: 3m



**For all sales and technical enquiries, please contact:**

+44 (0)114 263 4266

[info@davidvillagelighting.co.uk](mailto:info@davidvillagelighting.co.uk)

[www.davidvillagelighting.co.uk](http://www.davidvillagelighting.co.uk)